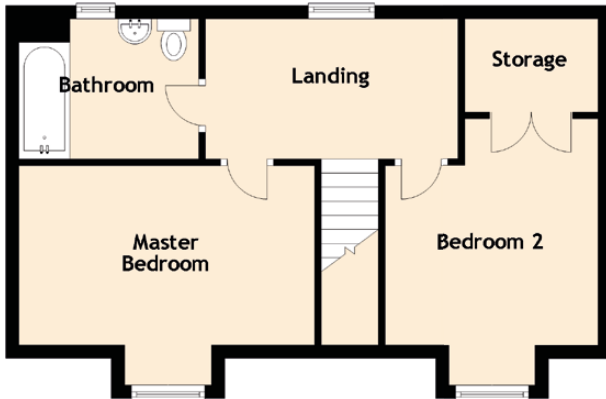
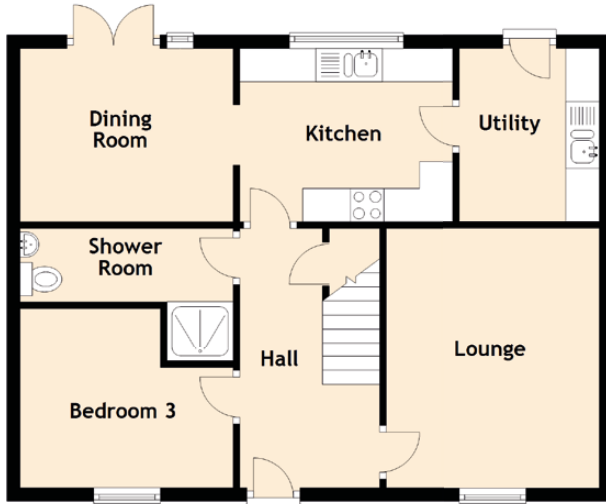


14 Avenger Way

PAISLEY, PA3 3FH



Approximate Dimensions (Taken from the widest point)

Lounge	3.90m (12'10") x 3.20m (10'6")
Kitchen	3.20m (10'6") x 2.60m (8'6")
Dining Room	3.20m (10'6") x 2.60m (8'6")
Utility	2.60m (8'6") x 2.10m (6'11")
Master Bedroom	4.44m (14'7") x 3.20m (10'6")
Bedroom 2	3.80m (12'6") x 3.20m (10'6")
Storage	2.00m (6'7") x 1.40m (4'7")
Bedroom 3	3.10m (10'2") x 2.70m (8'10")
Bathroom	2.70m (8'10") x 1.90m (6'3")
Shower Room	3.20m (10'6") x 2.00m (6'7")

Gross internal floor area (m²): 103m²