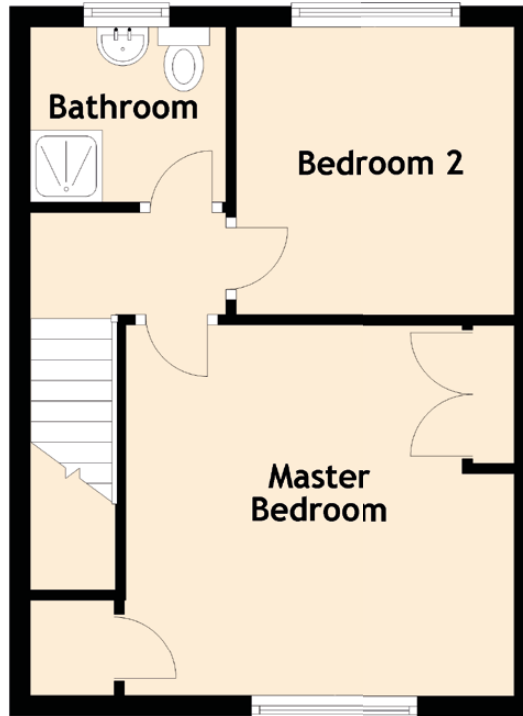
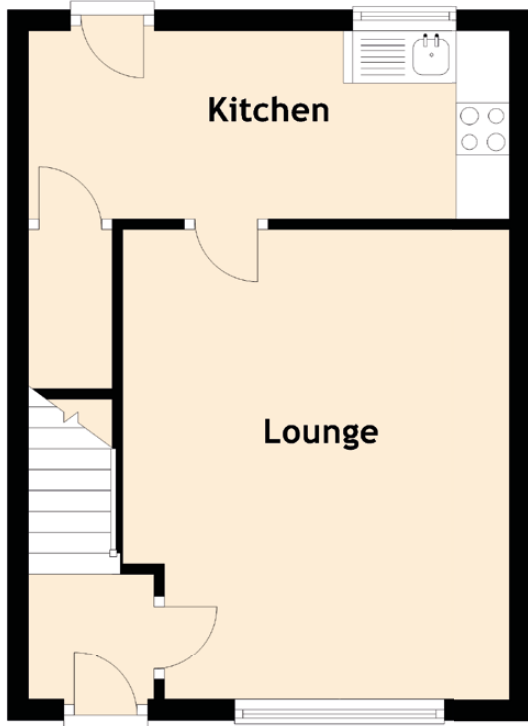


116 Spey Road

BEARSDEN, GLASGOW, G61 1LQ



Approximate Dimensions (Taken from the widest point)

Lounge	4.60m (15'1") x 3.70m (12'2")
Kitchen	4.60m (15'1") x 1.80m (5'11")
Master Bedroom	3.70m (12'2") x 3.60m (11'10")
Bedroom 2	2.80m (9'2") x 2.70m (8'10")
Bathroom	1.90m (6'3") x 1.70m (5'7")

Gross internal floor area (m²): 60m²