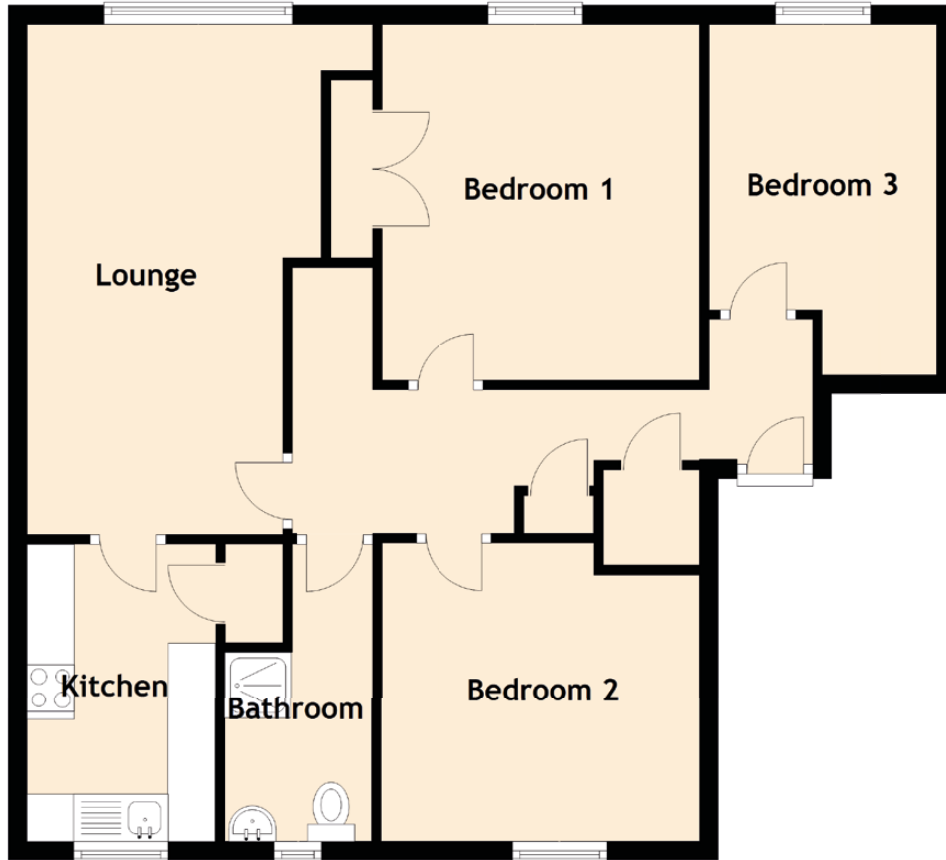


2/L, 96 Dunholm Road

DUNDEE, DD2 4RW



Approximate Dimensions (Taken from the widest point)

Lounge	5.40m (17'9") x 3.65m (12')
Kitchen	3.15m (10'4") x 1.99m (6'6")
Bedroom 1	3.77m (12'4") x 3.37m (11'1")
Bedroom 2	3.37m (11'1") x 3.16m (10'4")
Bedroom 3	3.71m (12'2") x 2.41m (7'11")
Bathroom	3.15m (10'4") x 1.56m (5'1")