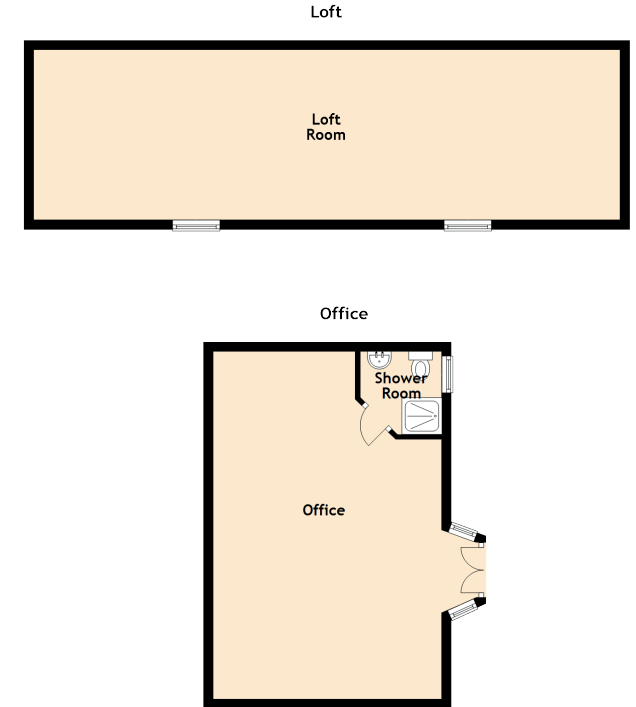
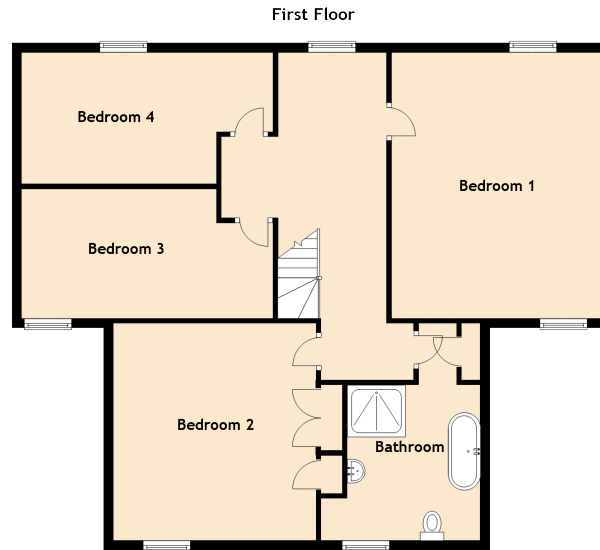


# Fardalehill Farm House

KILMARNOCK, EAST AYRSHIRE, KA2 0DX



Approximate Dimensions  
(Taken from the widest point)

Ground Floor	
Lounge	6.72m (22'1") x 5.24m (17'2")
Kitchen	4.81m (15'9") x 3.19m (10'6")
Dining Room	4.33m (14'2") x 3.49m (11'5")
Utility	2.64m (8'8") x 1.41m (4'8")

Bedroom 5	5.54m (18'2") x 4.02m (13'2")
Bathroom	3.34m (10'11") x 2.02m (6'8")
First Floor	
Bedroom 1	5.63m (18'6") x 4.54m (14'11")
Bedroom 2	4.59m (15'1") x 4.15m (13'7")
Bedroom 3	5.32m (17'5") x 2.70m (8'10")
Bedroom 4	5.32m (17'5") x 2.78m (9'1")

Bathroom	4.59m (15'1") x 3.37m (11'1")
Loft	
Loft Room	12.40m (40'8") x 3.59m (11'9")
Office	
Office	7.35m (24'1") x 4.84m (15'11")
Shower Room	1.75m (5'9") x 1.72m (5'8")