

The Old Bank House, 69 Strait Path

BANFF, GARDENSTOWN, ABERDEENSHIRE, AB45 3ZQ

Approximate Dimensions (Taken from the widest point)

Ground Floor

Games/Family Room	6.08m (19'11") x 4.90m (16'1")
Utility	3.00m (9'10") x 1.70m (5'7")
WC	1.80m (5'11") x 0.80m (2'7")

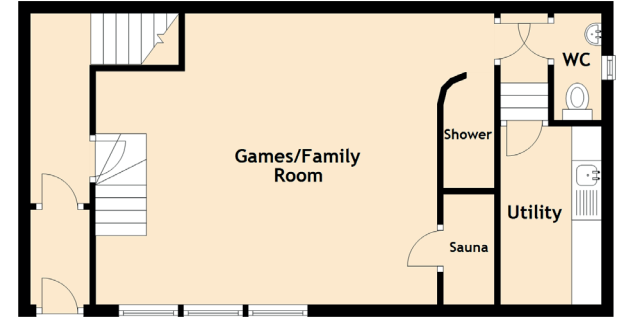
First Floor

Lounge	4.40m (14'5") x 3.70m (12'2")
Kitchen/Diner	6.20m (20'4") x 5.40m (17'9")

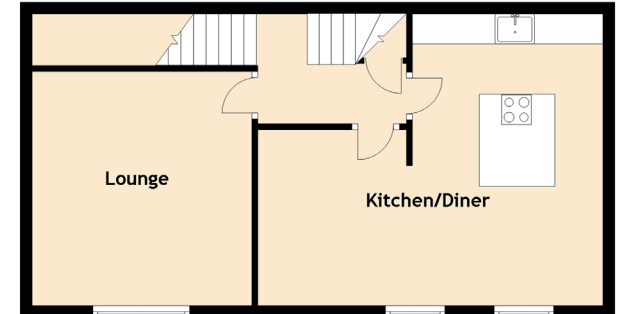
Second Floor

Bedroom 1	4.90m (16'1") x 3.60m (11'10")
Bedroom 2	3.40m (11'2") x 2.90m (9'6")
Bedroom 3/Office	2.30m (7'7") x 2.10m (6'11")
Bathroom	2.80m (9'2") x 2.70m (8'10")

Ground Floor



First Floor



Second Floor

