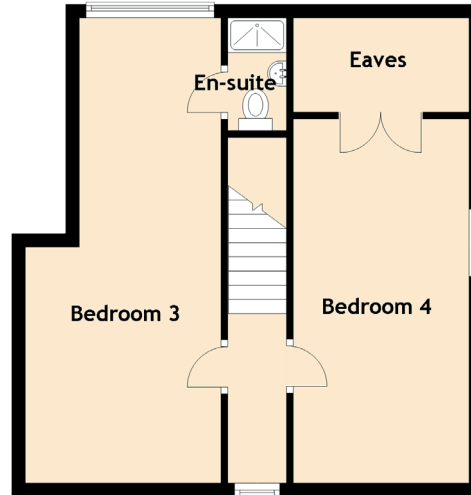
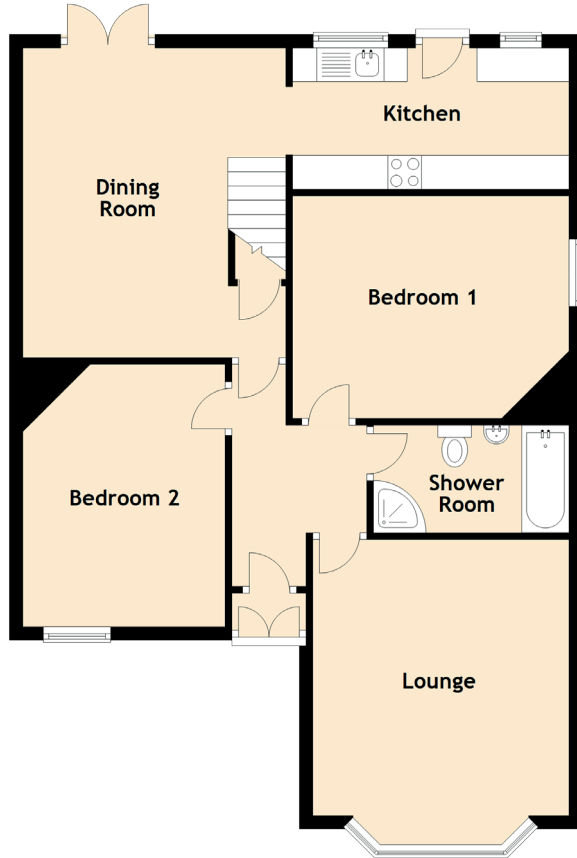


27 Lanfine Road

RALSTON, PAISLEY, PA1 3NJ



Approximate Dimensions (Taken from the widest point)

Ground Floor

Lounge	4.10m (13'5") x 3.80m (12'6")
Dining Room	4.60m (15'1") x 3.90m (12'10")
Kitchen	4.10m (13'5") x 2.10m (6'11")
Bedroom 1	4.10m (13'5") x 3.70m (12'2")
Bedroom 2	3.90m (12'10") x 3.00m (9'10")
Shower Room	3.00m (9'10") x 1.60m (5'3")

First Floor

Bedroom 3	6.90m (22'8") x 2.90m (9'6")
En-suite	1.70m (5'7") x 1.00m (3'4")
Bedroom 4	5.40m (17'9") x 2.60m (8'6")