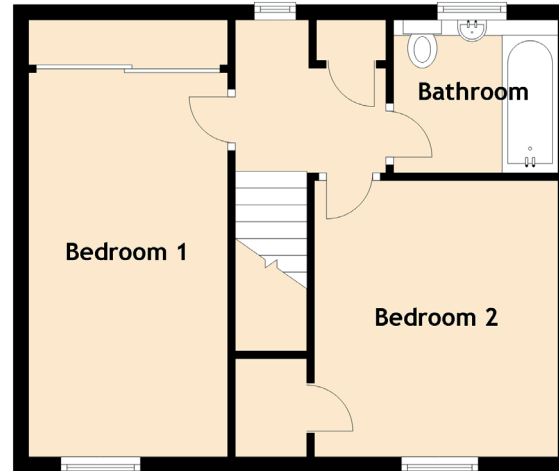
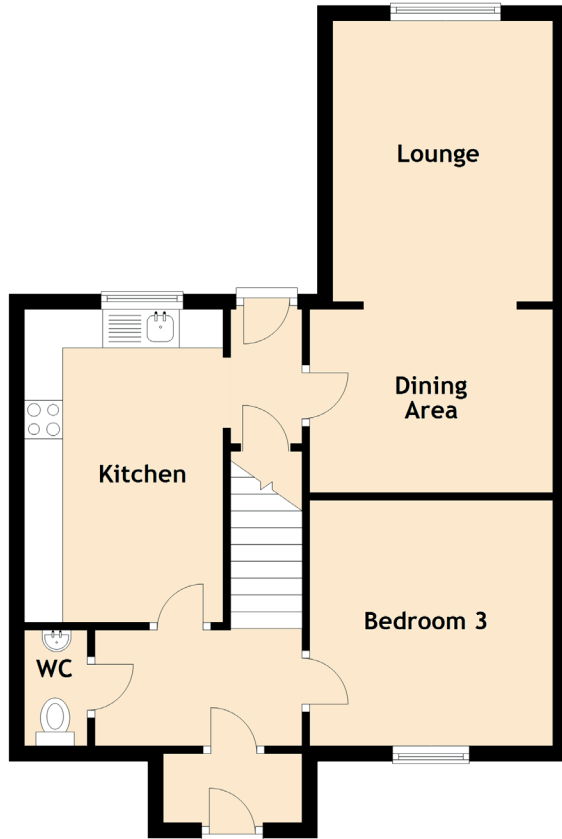


28 Westland Park

AUCHTERMUCHTY, FIFE, KY14 7DY



Approximate Dimensions
(Taken from the widest point)

Ground Floor

Lounge	3.66m (12') x 2.87m (9'5")
Kitchen	4.11m (13'6") x 2.59m (8'6")
Dining Area	3.17m (10'5") x 2.39m (7'10")
Bedroom 3	3.20m (10'6") x 3.17m (10'5")
WC	1.51m (4'11") x 0.82m (2'8")

First Floor

Bedroom 1	5.01m (16'5") x 2.61m (8'7")
Bedroom 2	3.60m (11'10") x 3.19m (10'6")
Bathroom	2.14m (7') x 2.00m (6'7")