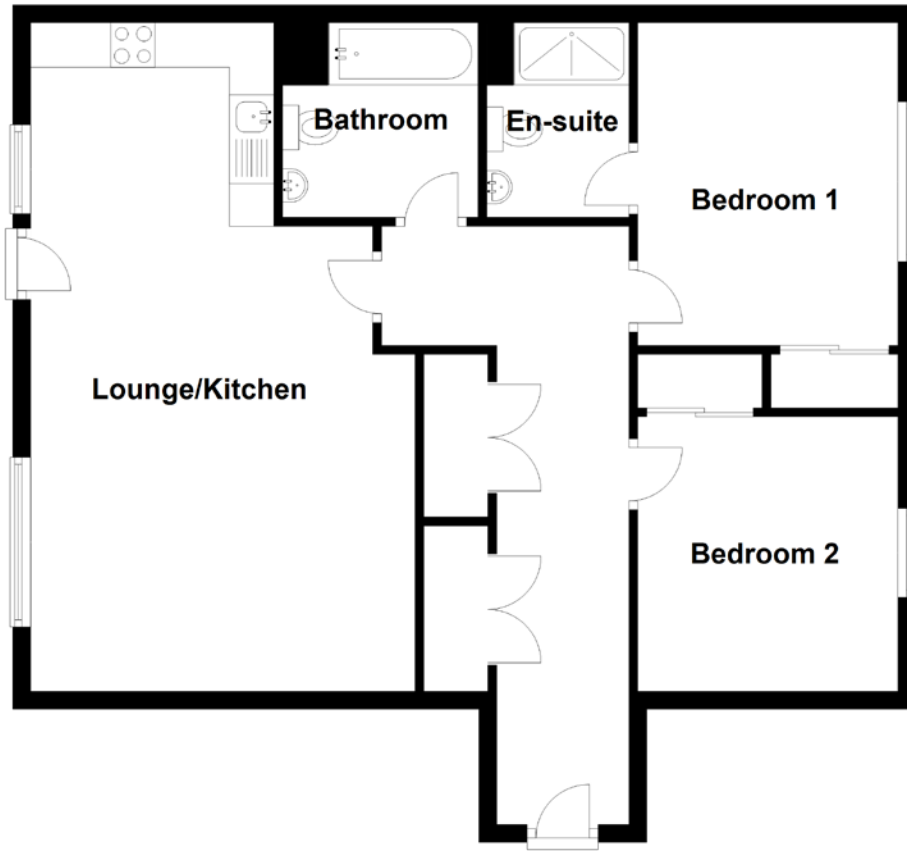


FLOOR PLAN, DIMENSIONS & MAP



Approximate Dimensions
(Taken from the widest point)

Lounge/Kitchen 7.52m (24'8") x 4.33m (14'2")
Bedroom 1 3.63m (11'11") x 2.93m (9'7")
En-suite 2.19m (7'2") x 1.60m (5'3")

Bedroom 2 3.16m (10'4") x 2.93m (9'7")
Bathroom 2.20m (7'3") x 2.19m (7'2")

Gross internal floor area (m²): 75m²

EPC Rating: D

