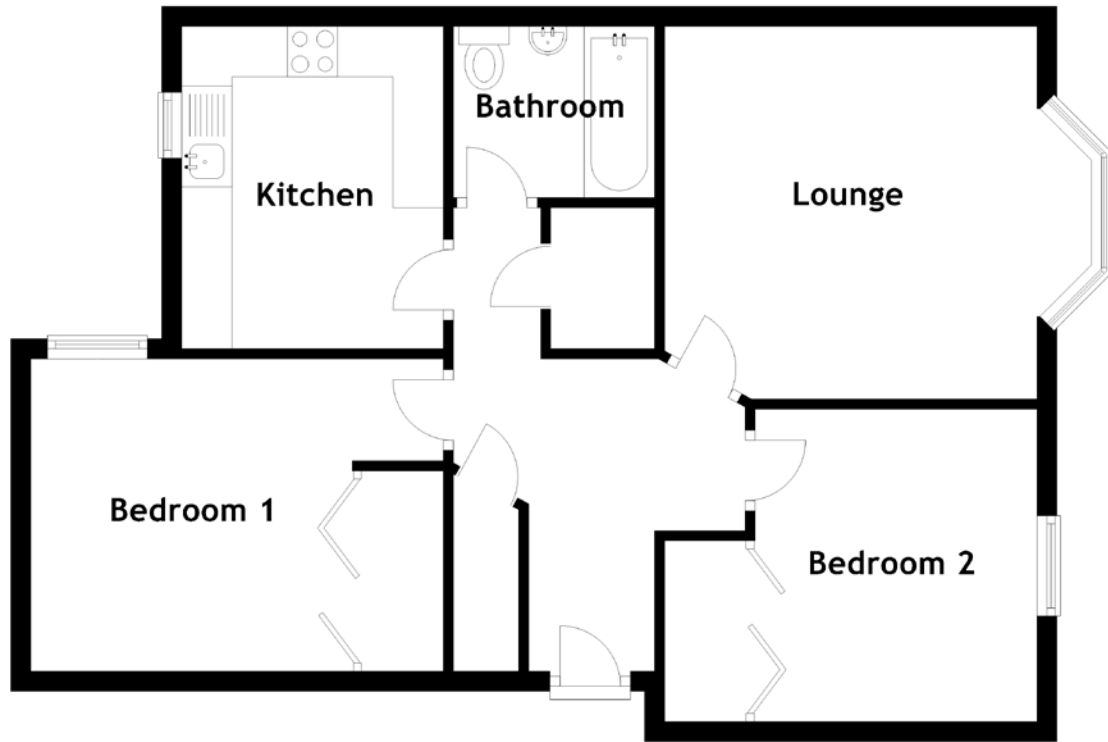


# FLOOR PLAN, DIMENSIONS & MAP



Approximate Dimensions (Taken from the widest point)

Lounge 3.70m (12'2") x 3.70m (12'2")  
Kitchen 3.20m (10'6") x 2.60m (8'6")  
Bedroom 1 4.10m (13'5") x 3.10m (10'2")

Bedroom 2 3.10m (10'2") x 2.80m (9'2")  
Bathroom 2.00m (6'7") x 1.70m (5'7")

Gross internal floor area (m<sup>2</sup>): 63m<sup>2</sup>  
EPC Rating: B

