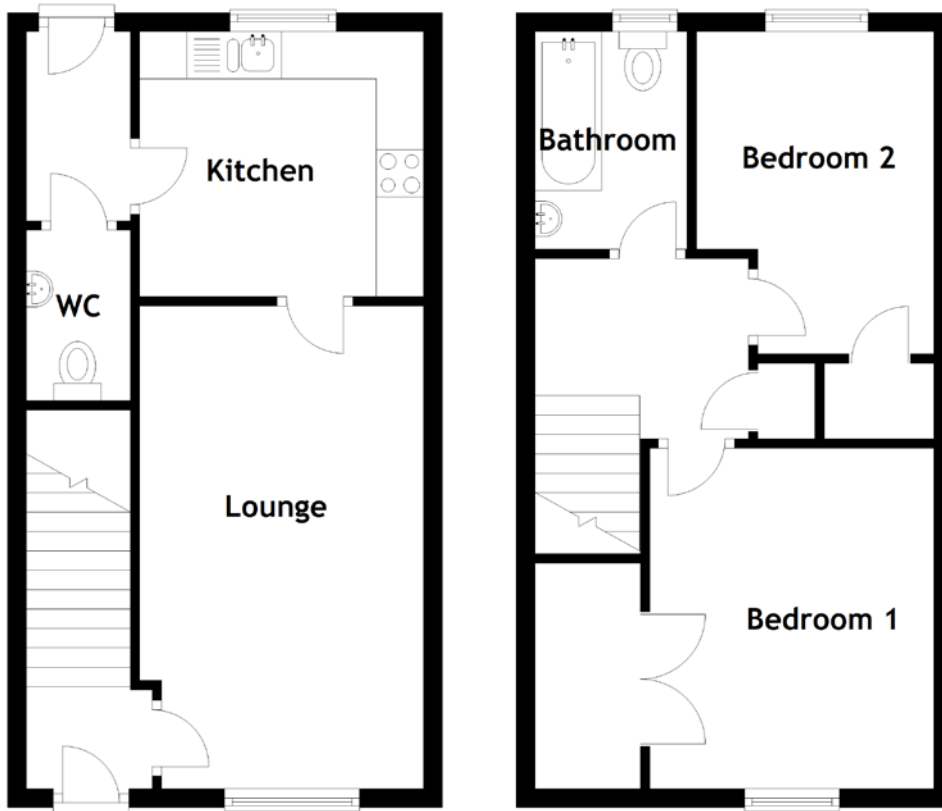


FLOOR PLAN, DIMENSIONS & MAP



Approximate Dimensions (Taken from the widest point)

Lounge 5.10m (16'9") x 3.00m (9'10")
 Kitchen 2.80m (9'2") x 2.80m (9'2")
 WC 1.80m (5'11") x 1.10m (3'7")
 Bedroom 1 3.60m (11'10") x 3.00m (9'10")

Bedroom 2 3.40m (11'2") x 2.50m (8'2")
 Bathroom 2.30m (7'7") x 1.50m (4'11")

Gross internal floor area (m²): 67m²

EPC Rating: C

