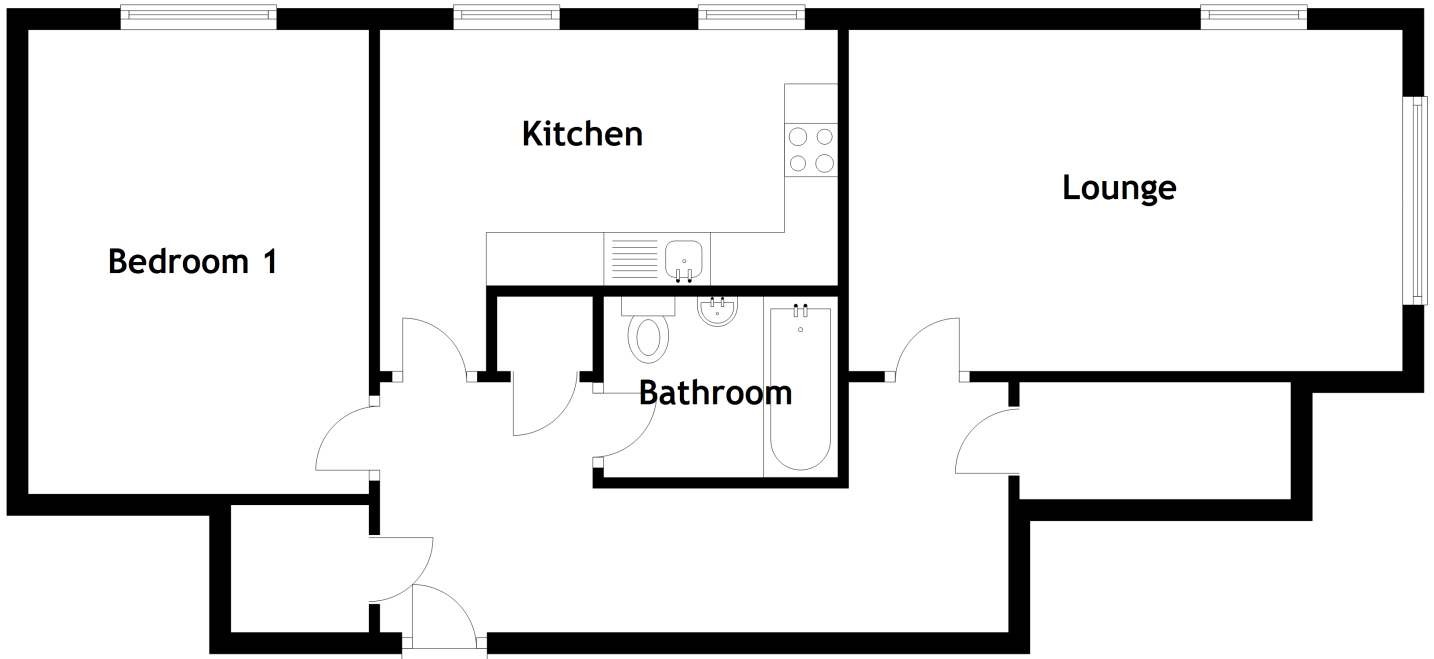


FLOOR PLAN, DIMENSIONS & MAP



Approximate Dimensions
(Taken from the widest point)

| | |
|-----------|-------------------------------|
| Bathroom | 2.20m (7'3") x 1.50m (4'11") |
| Bedroom 1 | 4.35m (14'3") x 3.20m (10'6") |

| | |
|---------|-------------------------------|
| Lounge | 5.20m (17'1") x 3.20m (10'6") |
| Kitchen | 4.30m (14'1") x 3.20m (10'6") |

Gross internal floor area (m²): 67m²
EPC Rating: C

