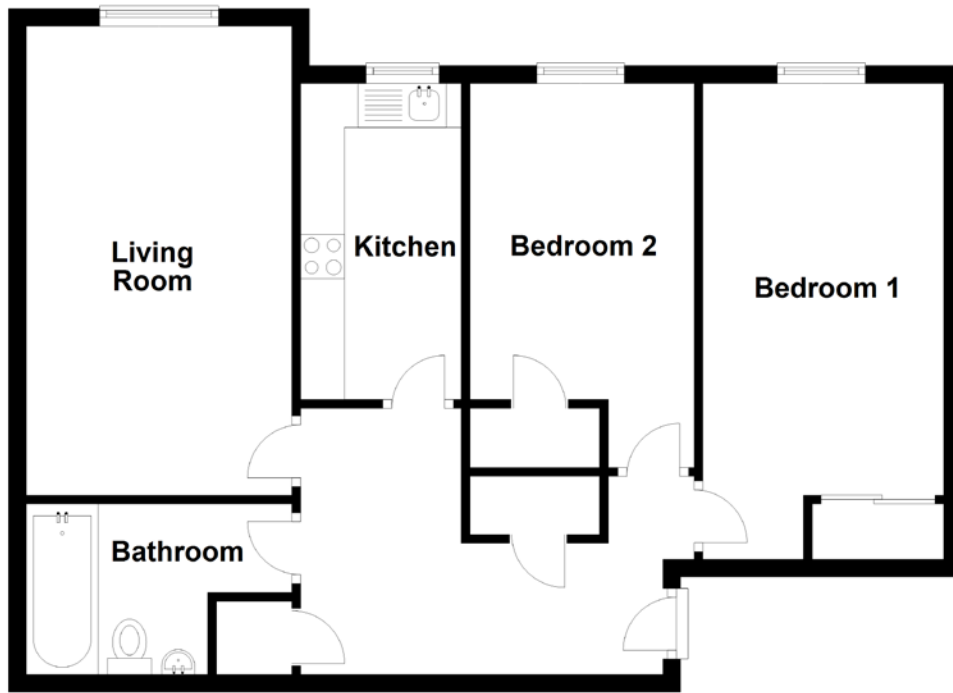


FLOOR PLAN, DIMENSIONS & MAP



Approximate Dimensions
(Taken from the widest point)

Living Room 5.31m (17'5") x 3.06m (10')
Kitchen 3.58m (11'9") x 1.82m (6')

Bedroom 1 5.39m (17'8") x 2.73m (8'11")
Bedroom 2 4.35m (14'3") x 2.54m (8'4")
Bathroom 3.01m (9'11") max x 1.93m (6'4")

Gross internal floor area (m²): TBCm² | EPC Rating: TBC

