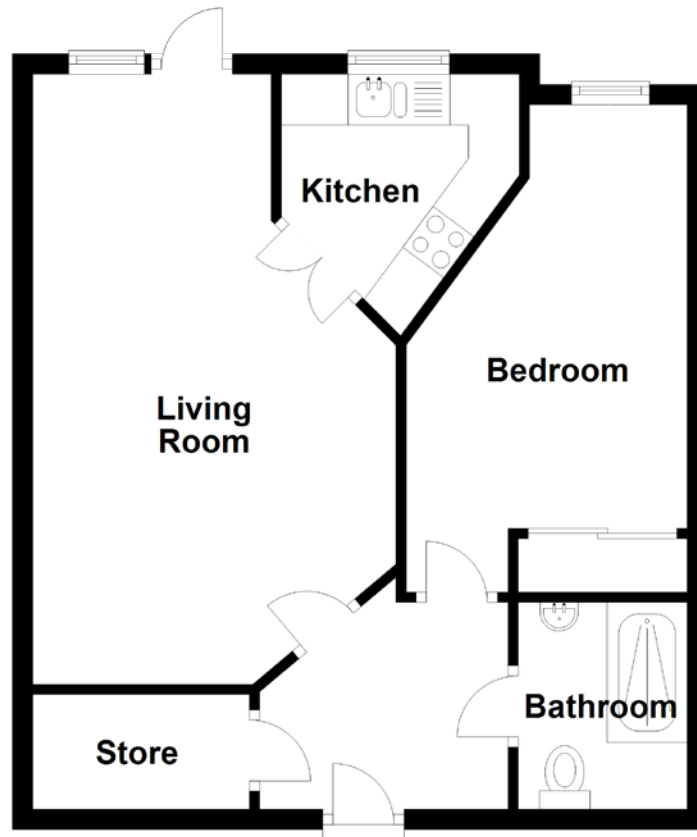


FLOOR PLAN, DIMENSIONS & MAP



Approximate Dimensions
(Taken from the widest point)

Living Room 6.00m (19'8") x 3.57m (11'9")
Kitchen 2.60m (8'6") x 2.34m (7'8")

Bedroom 4.79m (15'9") x 2.76m (9'1")
Bathroom 2.03m (6'8") x 1.66m (5'5")

Gross internal floor area (m²): 48m²
EPC Rating: C

