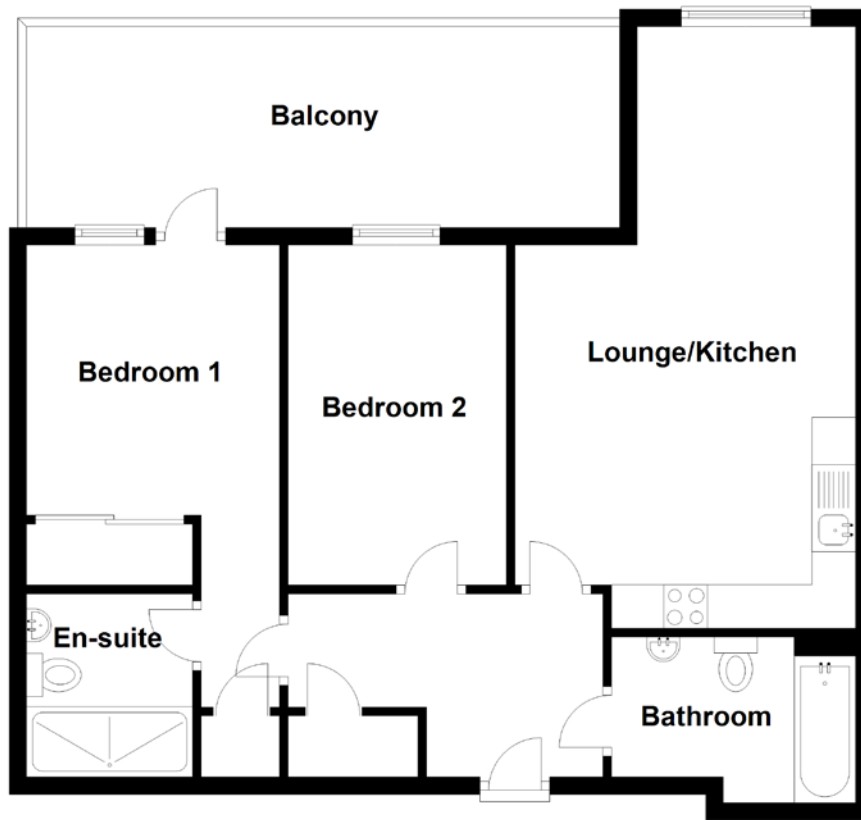


FLOOR PLAN, DIMENSIONS & MAP



Approximate Dimensions
(Taken from the widest point)

Lounge/Kitchen	6.90m (22'8") x 3.90m (12'10")
Bedroom 1	5.30m (17'5") x 2.90m (9'6")
En-suite	2.10m (6'11") x 1.90m (6'3")
Bedroom 2	3.90m (12'10") x 2.50m (8'2")
Bathroom	2.80m (9'2") x 1.90m (6'3")

Balcony 6.90m (22'8") x 2.40m (7'11")

Gross internal floor area (m²): 65m²
EPC Rating: B

Extras (Included in the sale): All fitted floor coverings, blinds, curtains, integrated kitchen appliances and light fittings.

