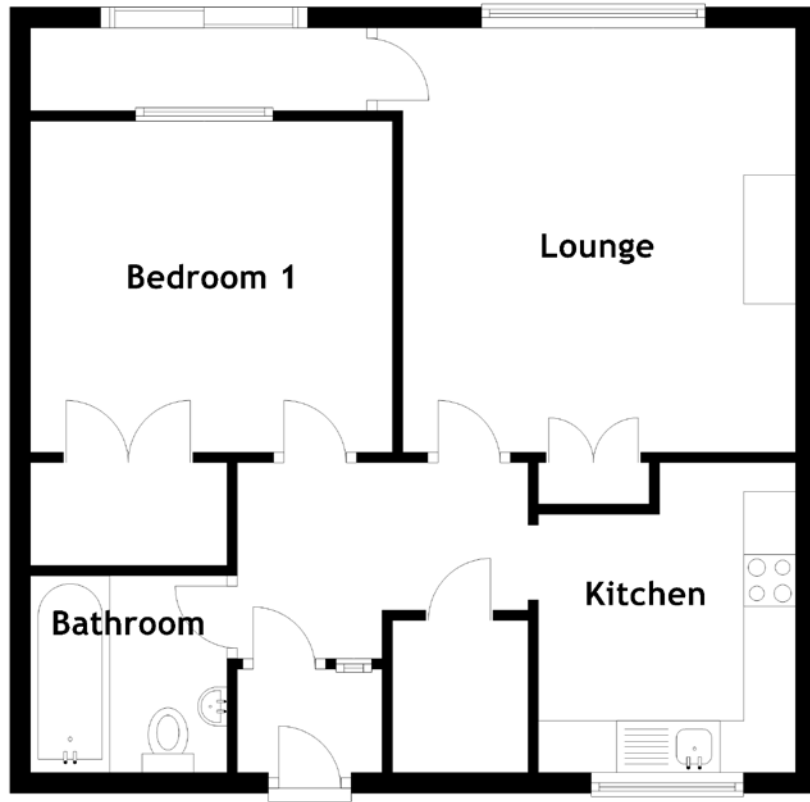


FLOOR PLAN, DIMENSIONS & MAP



Approximate Dimensions
(Taken from the widest point)

Bedroom 1
Bathroom

3.50m (11'6") x 3.20m (10'6")
1.90m (6'3") x 1.90m (6'3")

Lounge
Kitchen

4.10m (13'5") x 3.80m (12'6")
3.00m (9'10") x 2.49m (8'2")

Gross internal floor area (m²): 48m²
EPC Rating: D

