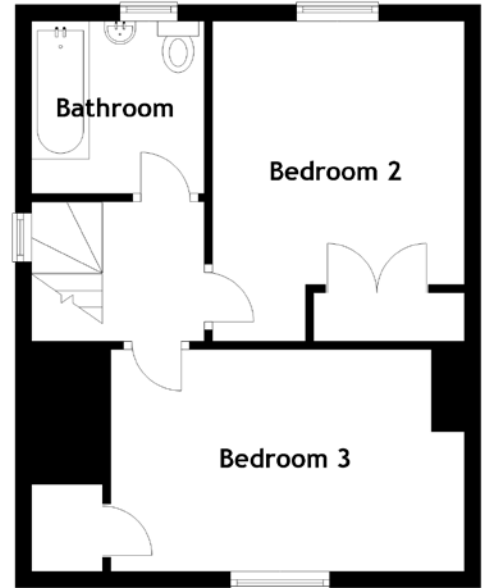
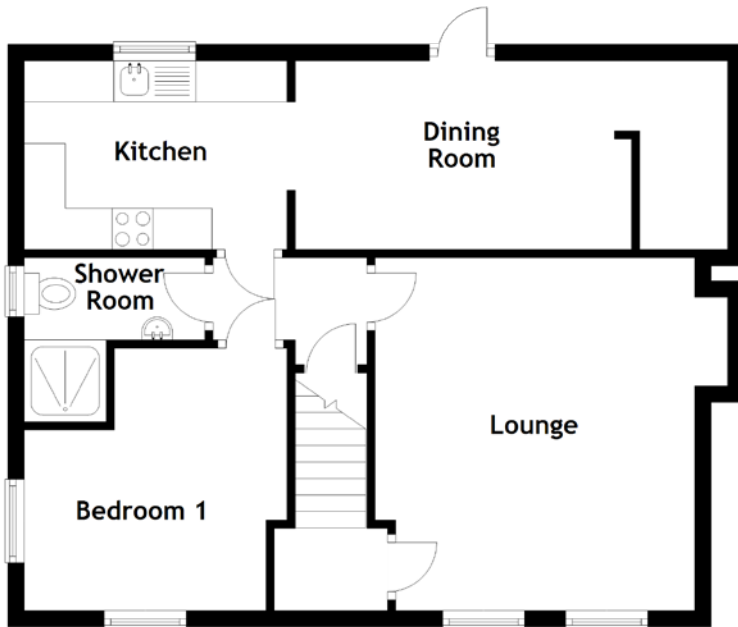


FLOOR PLAN, DIMENSIONS & MAP



Approximate Dimensions
(Taken from the widest point)

Lounge	4.30m (14'1") x 3.90m (12'9")
Kitchen	3.20m (10'6") x 2.30m (7'7")
Dining Room	4.10m (13'5") x 2.30m (7'7")
Shower Room	2.20m (7'3") x 1.00m (3'4")

Bedroom 1	3.20m (10'6") x 3.20m (10'6")
Bedroom 2	3.90m (12'10") x 3.10m (10'2")
Bedroom 3	4.30m (14'1") x 2.70m (8'10")
Bathroom	2.10m (6'11") x 2.10m (6'11")

Gross internal floor area (m²): 110m²
EPC Rating: D

