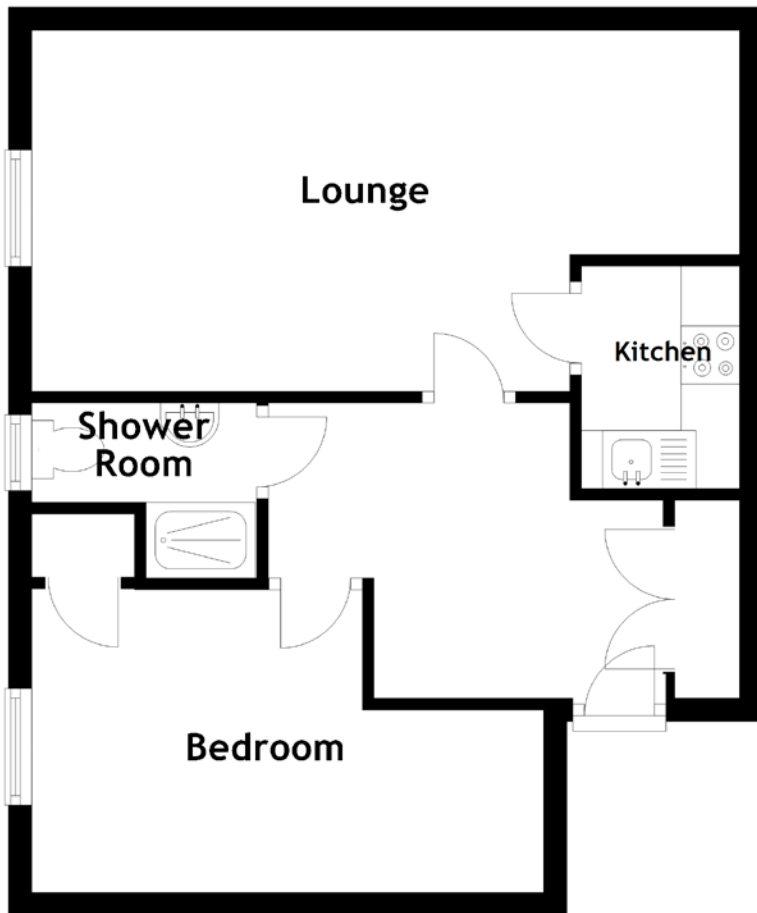


FLOOR PLAN, DIMENSIONS & MAP



Approximate Dimensions
(Taken from the widest point)

Lounge	6.07m (19'11") x 3.10m (10'2")
Kitchen	1.93m (6'4") x 1.45m (4'9")
Bedroom	4.39m (14'5") x 2.60m (8'6")
Shower Room	1.93m (6'4") x 1.50m (4'11")

Gross internal floor area (m²): 39m²

EPC Rating: C

Extras (Included in the sale): All furniture is available by separate negotiation.

