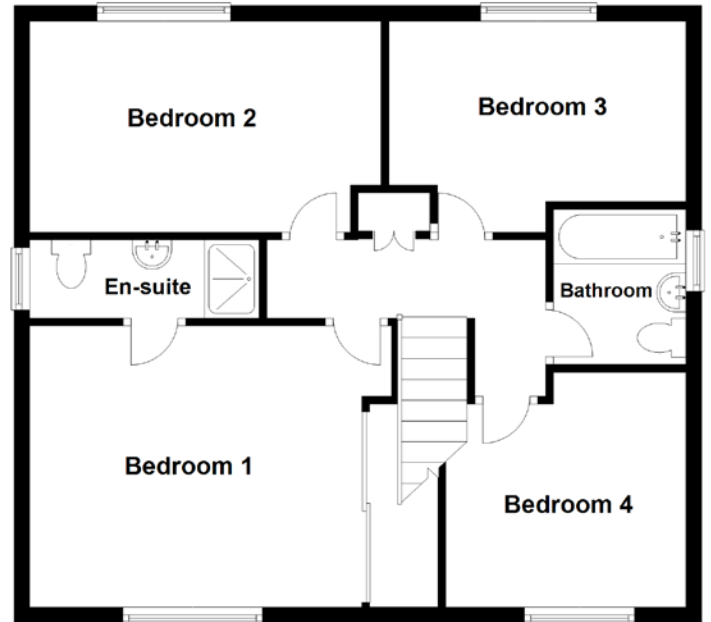
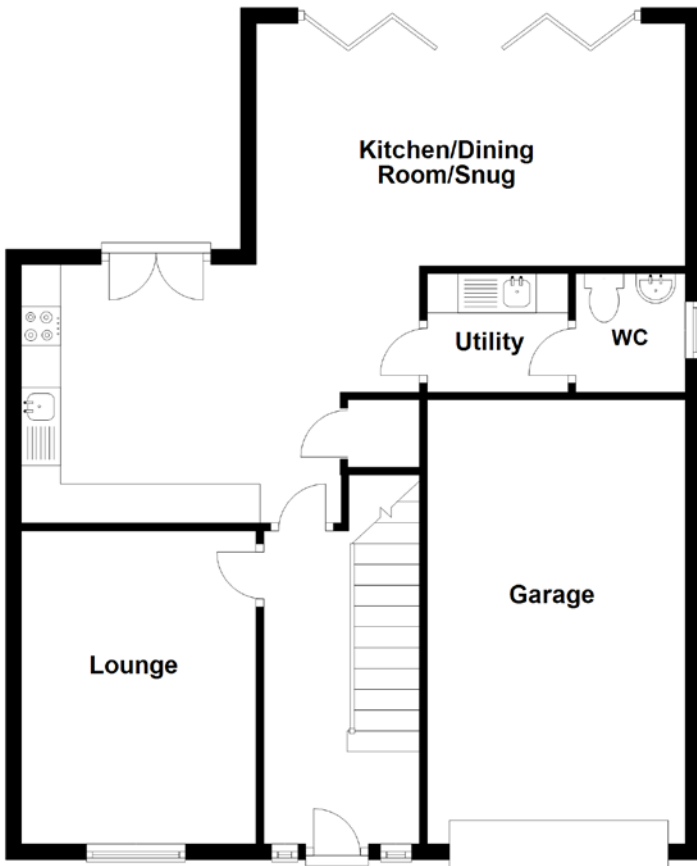


FLOOR PLAN, DIMENSIONS & MAP



Approximate Dimensions
(Taken from the widest point)

Lounge	4.00m (13'1") x 3.00m (9'10")
Kitchen/Dining Room/Snug	6.40m (21') x 5.20m (17'1")
Utility	1.80m (5'11") x 1.51m (5')
WC	1.60m (5'3") x 1.50m (4'11")
Bedroom 1	4.10m (13'5") x 3.60m (11'10")
En-suite	2.40m (7'11") x 1.20m (3'11")

Bedroom 2	4.40m (14'5") x 2.70m (8'10")
Bedroom 3	3.80m (12'6") x 3.00m (9'10")
Bedroom 4	3.10m (10'2") x 3.00m (9'10")
Bathroom	2.20m (7'3") x 1.60m (5'3")
Garage	5.67m (18'7") x 3.30m (10'10")

Gross internal floor area (m²): 115m²

EPC Rating: D

