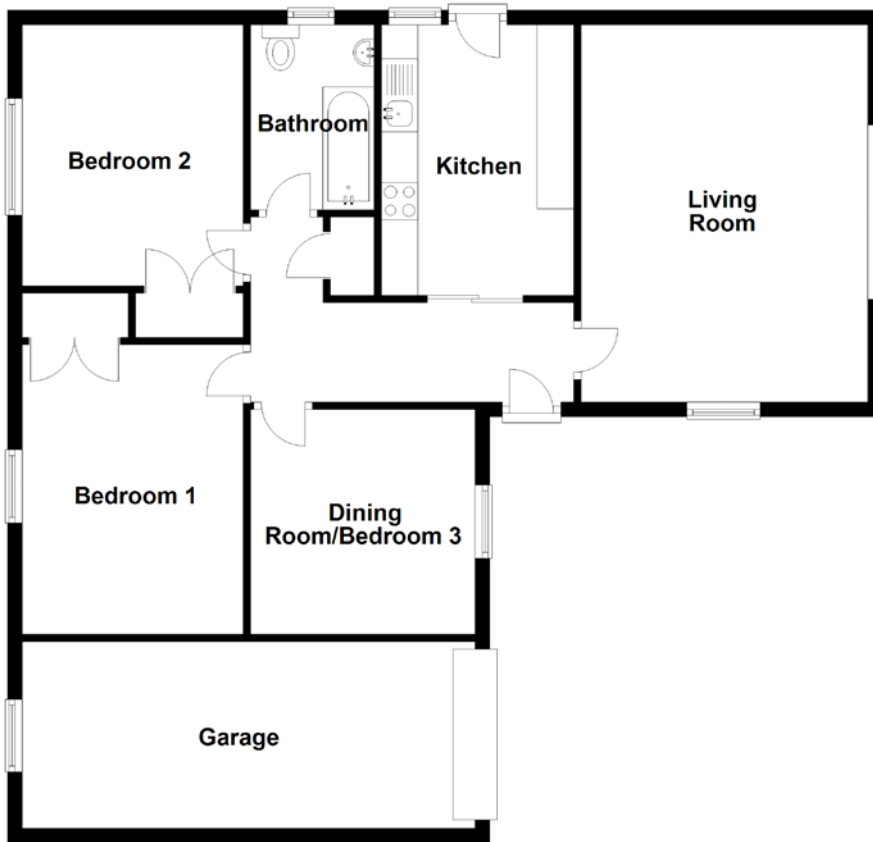


FLOOR PLAN, DIMENSIONS & MAP



Approximate Dimensions (Taken from the widest point)

Living Room 5.16m (16'11") x 3.92m (12'10")
Kitchen 3.70m (12'2") x 2.63m (8'8")
Bedroom 1 3.96m (13') x 3.02m (9'11")
Bedroom 2 3.57m (11'9") x 3.02m (9'11")

Dining Room/Bed 3 3.07m (10'1") x 2.95m (9'8")
Bathroom 2.53m (8'4") x 1.69m (5'7")
Garage 6.72m (22'1") x 2.55m (8'4")

Gross internal floor area (m²): 80m²
EPC Rating: D

