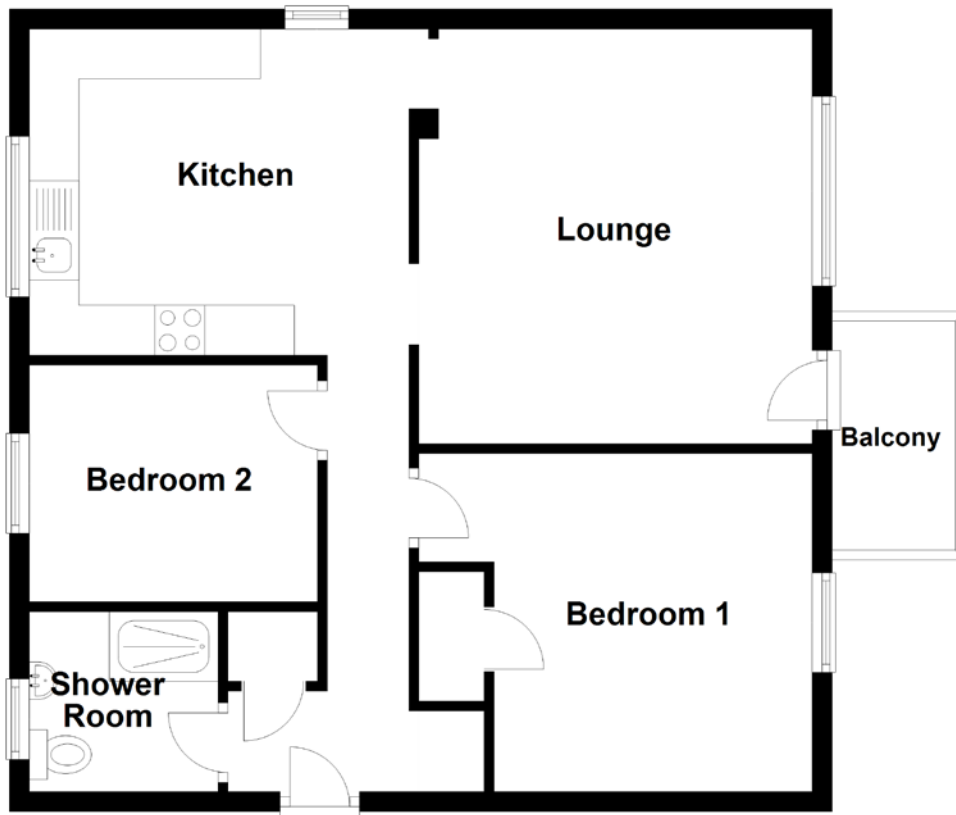


FLOOR PLAN, DIMENSIONS & MAP



Approximate Dimensions (Taken from the widest point)

Shower Room

1.90m (6'3") x 1.81m (5'11")

Lounge

4.17m (13'8") x 3.96m (13')

Gross internal floor area (m²): 61m²

Balcony

2.30m (7'7") x 1.24m (4'1")

EPC Rating: C

Kitchen

4.02m (13'2") x 3.28m (10'9")

Bedroom 1

3.96m (13') x 2.83m (9'3")

Bedroom 2

2.90m (9'6") x 2.38m (7'10")

Extras (Included in the sale): Floor coverings, light fittings and window dressings.

