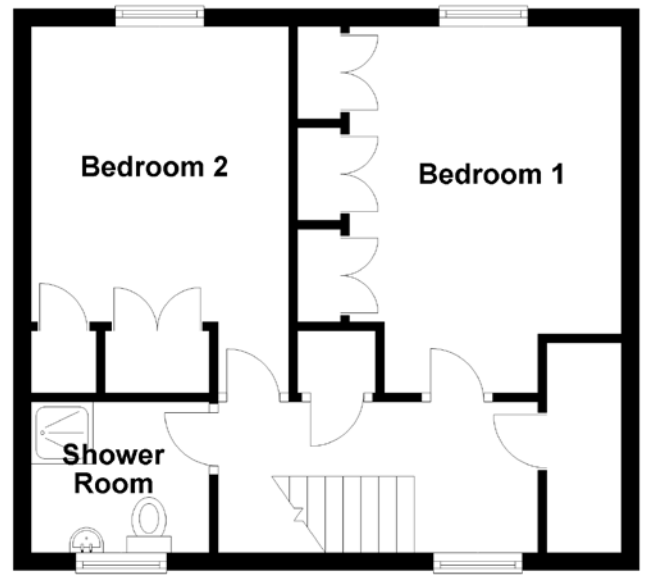
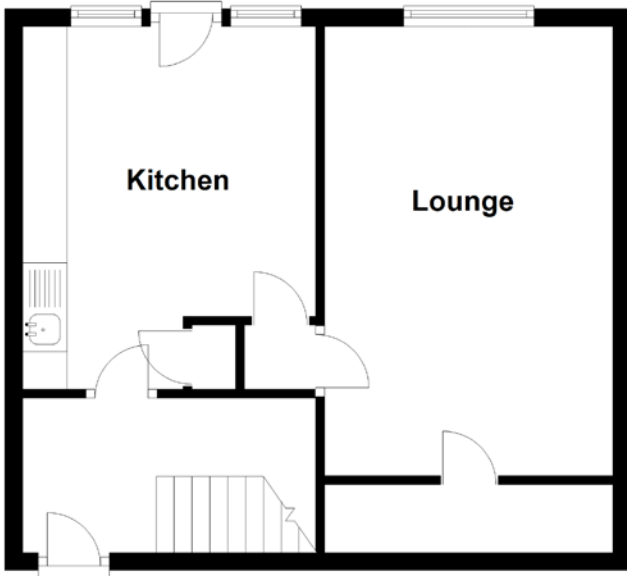


FLOOR PLAN, DIMENSIONS & MAP



Approximate Dimensions (Taken from the widest point)

Lounge 5.06m (16'7") x 3.25m (10'8")
 Kitchen 4.09m (13'5") x 3.30m (10'10")
 Bedroom 1 4.13m (13'7") x 3.06m (10'1")

Bedroom 2 4.13m (13'7") x 2.90m (9'6")
 Shower Room 2.01m (6'7") x 1.70m (5'7")

Gross internal floor area (m²): 80m²
 EPC Rating: D

