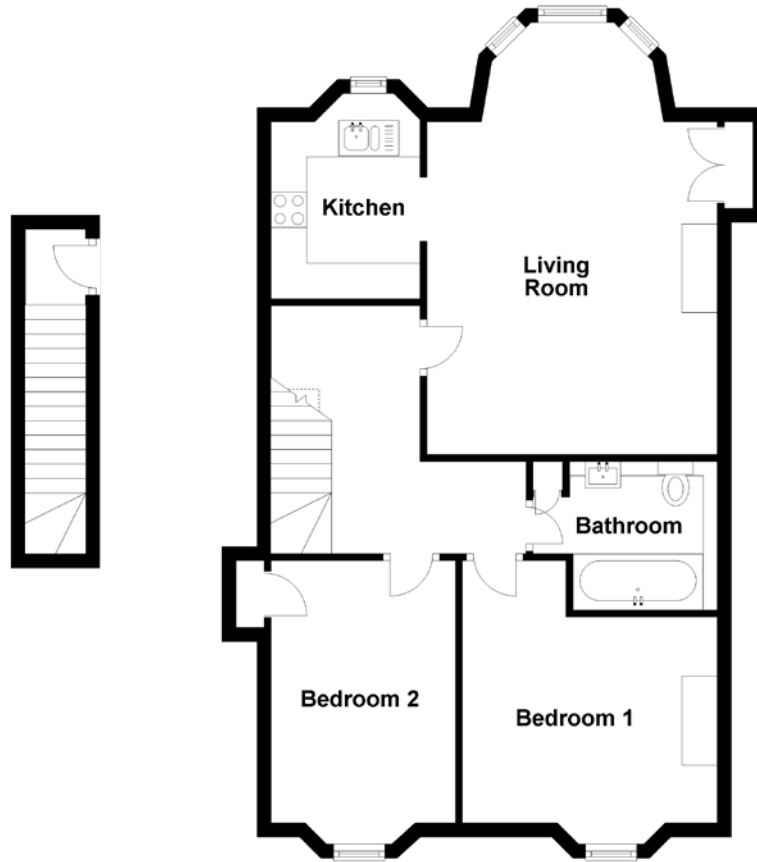


FLOOR PLAN, DIMENSIONS & MAP



Approximate Dimensions (Taken from the widest point)

Living Room 6.10m (20') x 4.10m (13'5")
Kitchen 2.50m (8'2") x 2.10m (6'11")
Bedroom 1 4.00m (13'1") x 3.60m (11'10")

Bedroom 2 4.00m (13'1") x 2.60m (8'6")
Bathroom 2.50m (8'2") x 2.10m (6'10")

Gross internal floor area (m²): 72m²
EPC Rating: D

