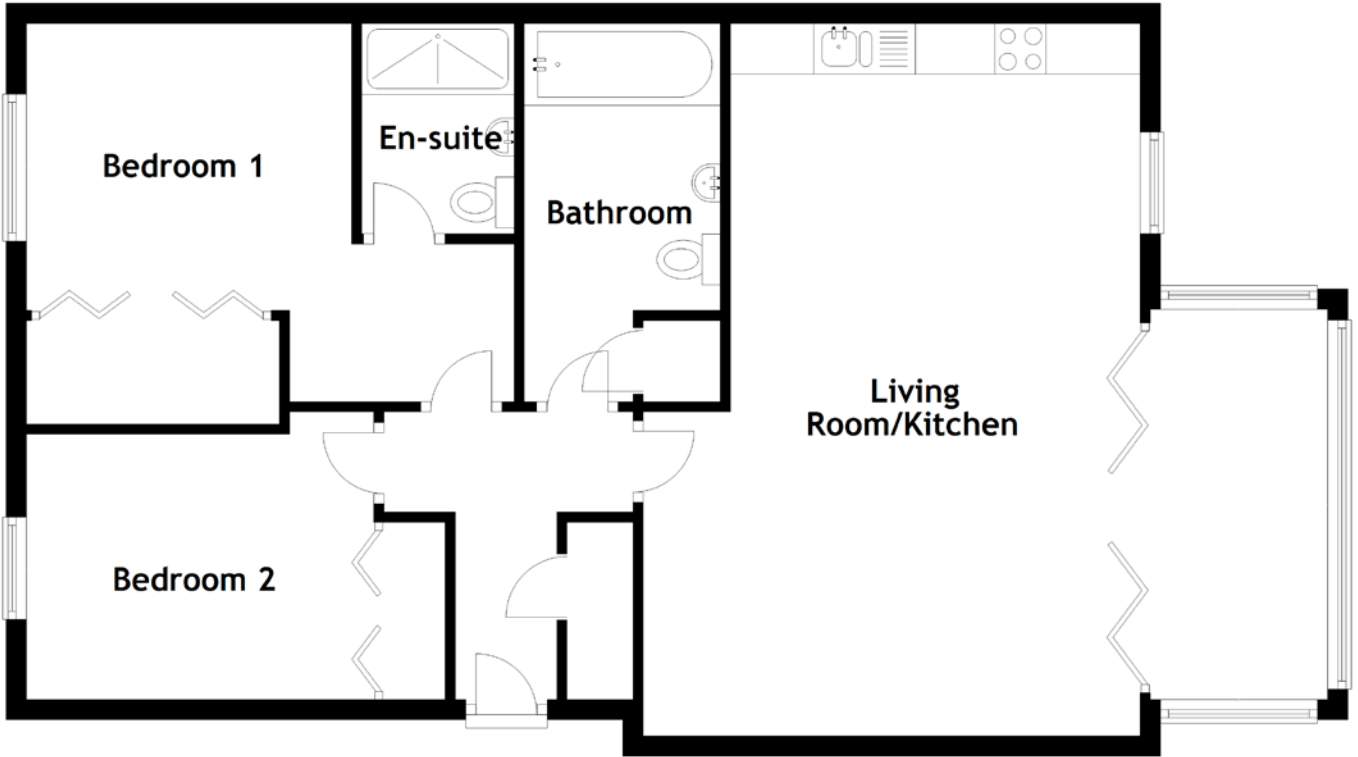


# FLOOR PLAN, DIMENSIONS & MAP



Approximate Dimensions (Taken from the widest point)

Living Room/Kitchen 6.79m (22'3") x 6.75m (22'2")  
 Bedroom 1 4.80m (15'9") x 3.72m (12'2")  
 En-suite 2.07m (6'9") x 1.50m (4'11")

Bedroom 2 3.42m (11'3") x 2.83m (9'3")  
 Bathroom 3.72m (12'2") x 1.93m (6'4")

Gross internal floor area (m<sup>2</sup>): 77m<sup>2</sup>  
 EPC Rating: C

**VIRTUAL TOUR**

