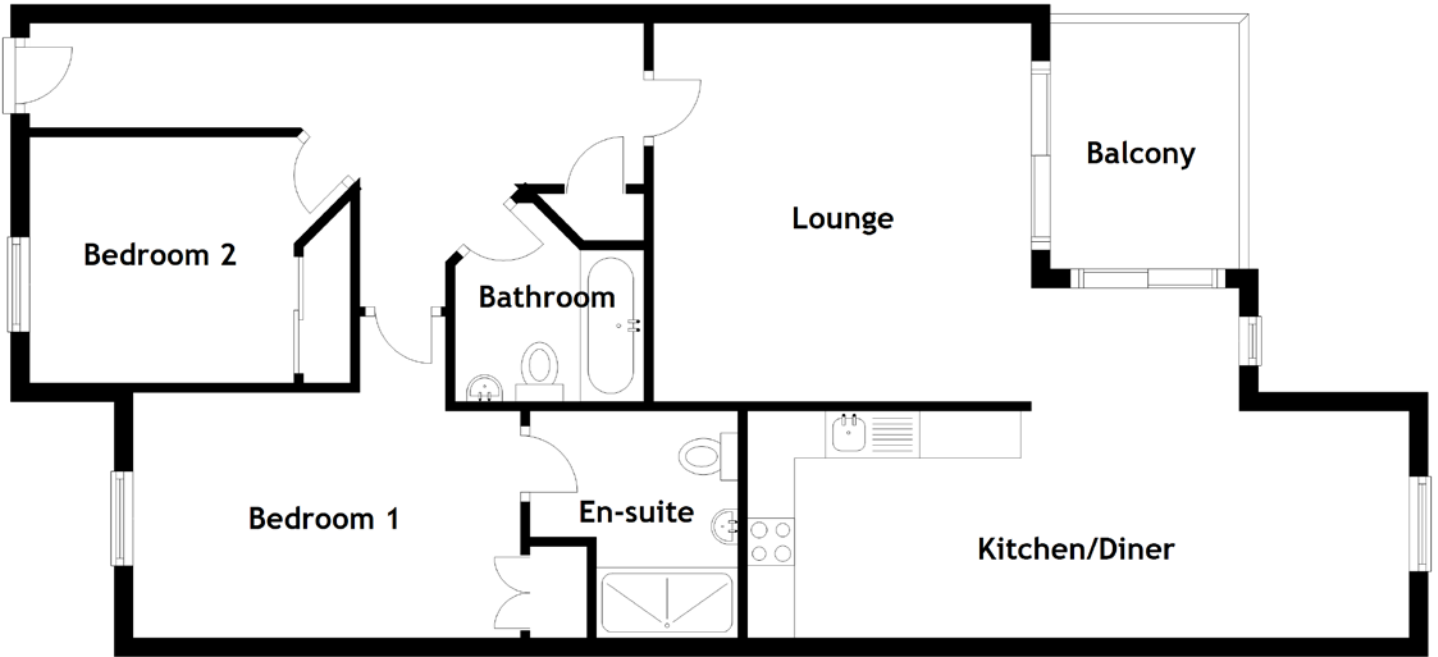


FLOOR PLAN, DIMENSIONS & MAP



Approximate Dimensions (Taken from the widest point)

Lounge 4.00m (13'1") x 4.00m (13'1")
 Kitchen/Diner 7.00m (23') x 2.40m (7'10")
 Balcony 2.70m (8'10") x 2.10m (6'11")
 Bedroom 1 4.10m (13'5") x 3.40m (11'2")

En-suite 2.40m (7'10") x 2.20m (7'3")
 Bedroom 2 2.80m (9'2") x 2.60m (8'6")
 Bathroom 2.20m (7'3") x 2.00m (6'7")

Gross internal floor area (m²): 80m²
 EPC Rating: B

