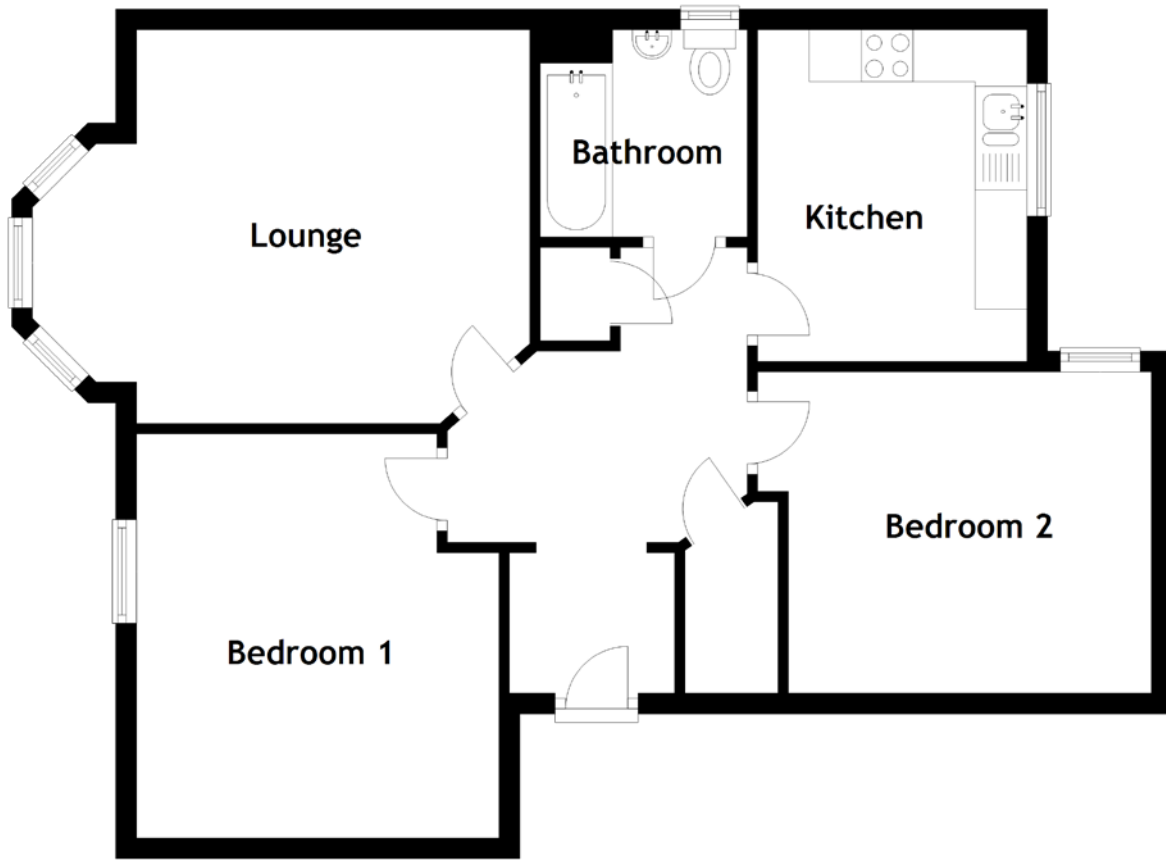


FLOOR PLAN, DIMENSIONS & MAP



Approximate Dimensions (Taken from the widest point)

Lounge 4.80m (15'9") x 3.80m (12'6")
 Kitchen 3.20m (10'6") x 2.60m (8'6")
 Bathroom 2.00m (6'7") x 2.00m (6'7")

Bedroom 1 3.90m (12'10") x 3.50m (11'6")
 Bedroom 2 3.80m (12'6") x 3.10m (10'2")

Gross internal floor area (m²): 63m²
 EPC Rating: B

