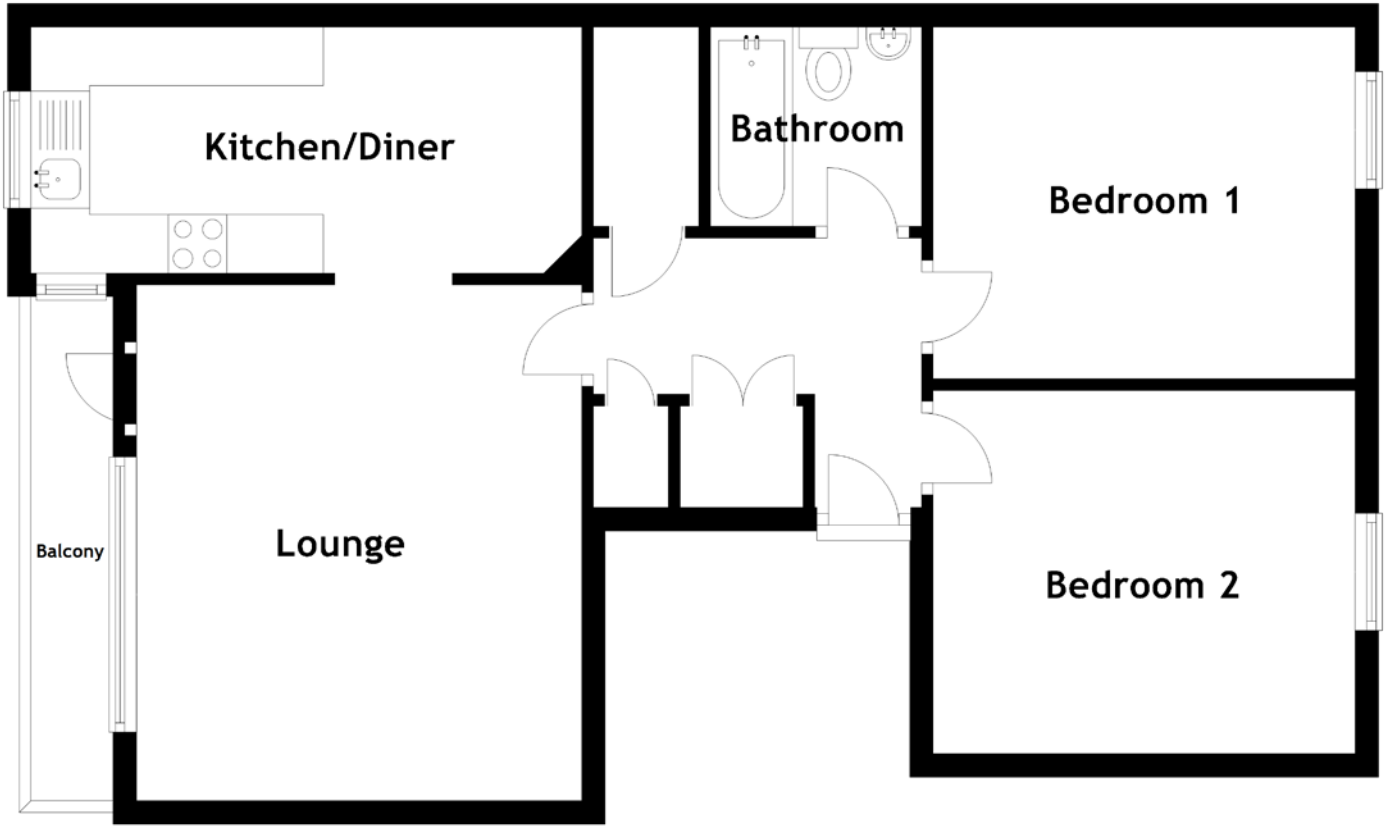


FLOOR PLAN, DIMENSIONS & MAP



Approximate Dimensions (Taken from the widest point)

Lounge 4.40m (14'5") x 3.60m (11'10")
 Balcony 4.40m (14'5") x 0.80m (2'7")
 Kitchen/Diner 4.70m (15'5") x 2.10m (6'11")

Bedroom 1 3.60m (11'10") x 3.00m (9'10")
 Bedroom 2 3.60m (11'10") x 3.10m (10'2")
 Bathroom 1.80m (5'11") x 1.70m (5'7")

Gross internal floor area (m²): 64m² | EPC Rating: D

VIRTUAL TOUR

