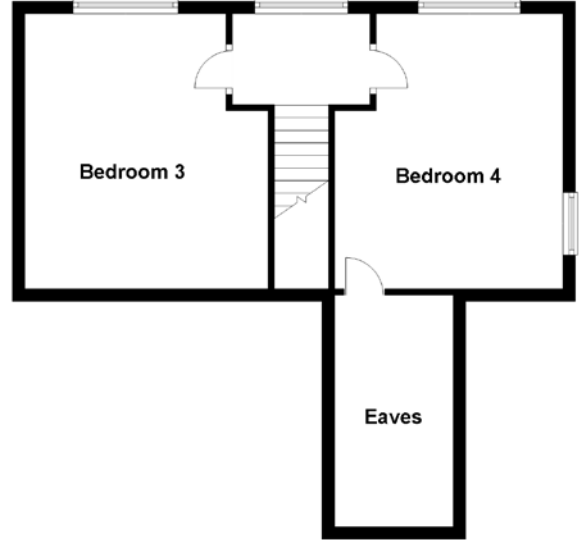
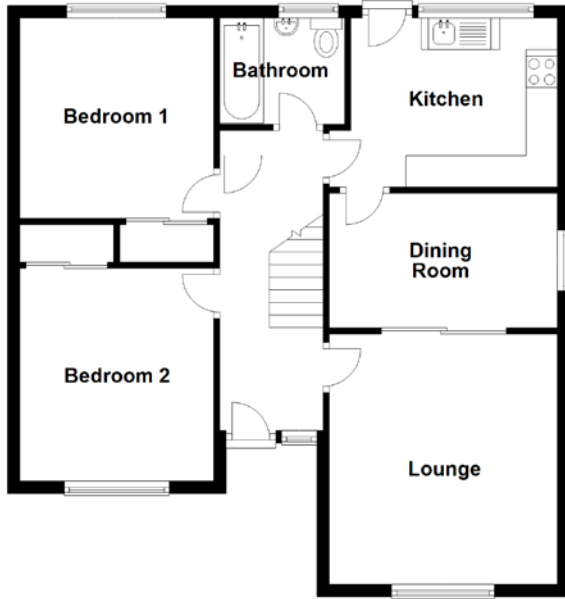
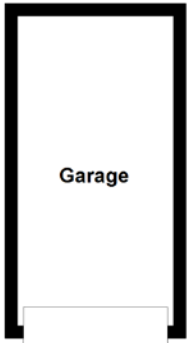


FLOOR PLAN, DIMENSIONS & MAP



Approximate Dimensions
(Taken from the widest point)

| | |
|-------------|-------------------------------|
| Lounge | 4.00m (13'1") x 3.65m (12') |
| Dining Room | 3.65m (12') x 2.15m (7'1") |
| Kitchen | 3.65m (12') x 2.70m (8'10") |
| Bathroom | 2.00m (6'7") x 1.70m (5'7") |
| Bedroom 1 | 3.20m (10'6") x 3.10m (10'2") |
| Bedroom 2 | 3.40m (11'2") x 3.10m (10'2") |

| | |
|-----------|-------------------------------|
| Bedroom 3 | 4.40m (14'5") x 3.89m (12'9") |
| Bedroom 4 | 4.40m (14'5") x 3.65m (12') |
| Garage | 5.00m (16'5") x 2.50m (8'2") |

Gross internal floor area (m²): 102m²
EPC Rating: E

Extras (Included in the sale): Some items may be available by separate negotiation.

