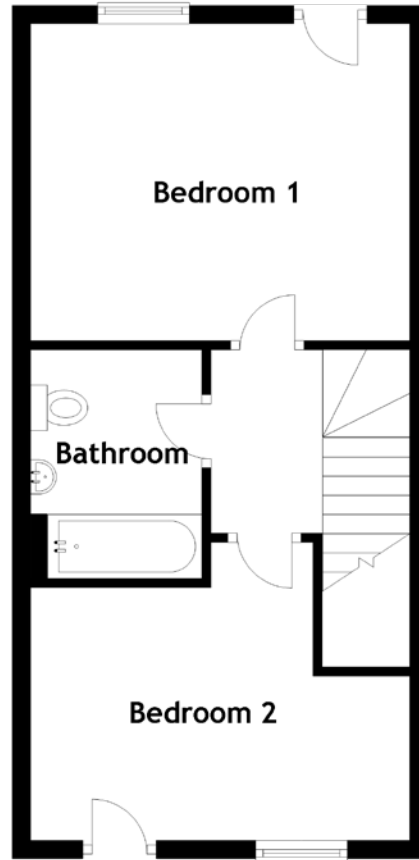
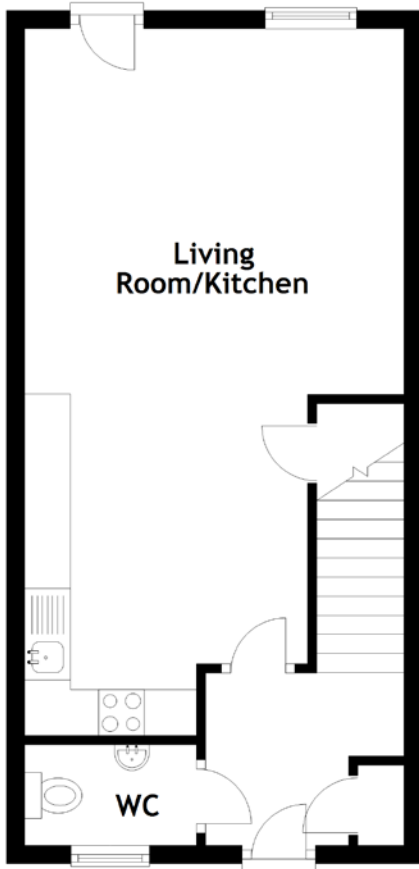


FLOOR PLAN, DIMENSIONS & MAP



Approximate Dimensions (Taken from the widest point)

Living Room/Kitchen 6.93m (22'9") x 4.14m (13'7")
 WC 1.87m (6'2") x 1.10m (3'7")
 Bathroom 2.15m (7'1") x 1.87m (6'2")

Bedroom 1 4.14m (13'7") x 3.00m (9'10")
 Bedroom 2 4.14m (13'7") x 3.26m (10'8")

Gross internal floor area (m²): 68m²
 EPC Rating: B

VIRTUAL TOUR

