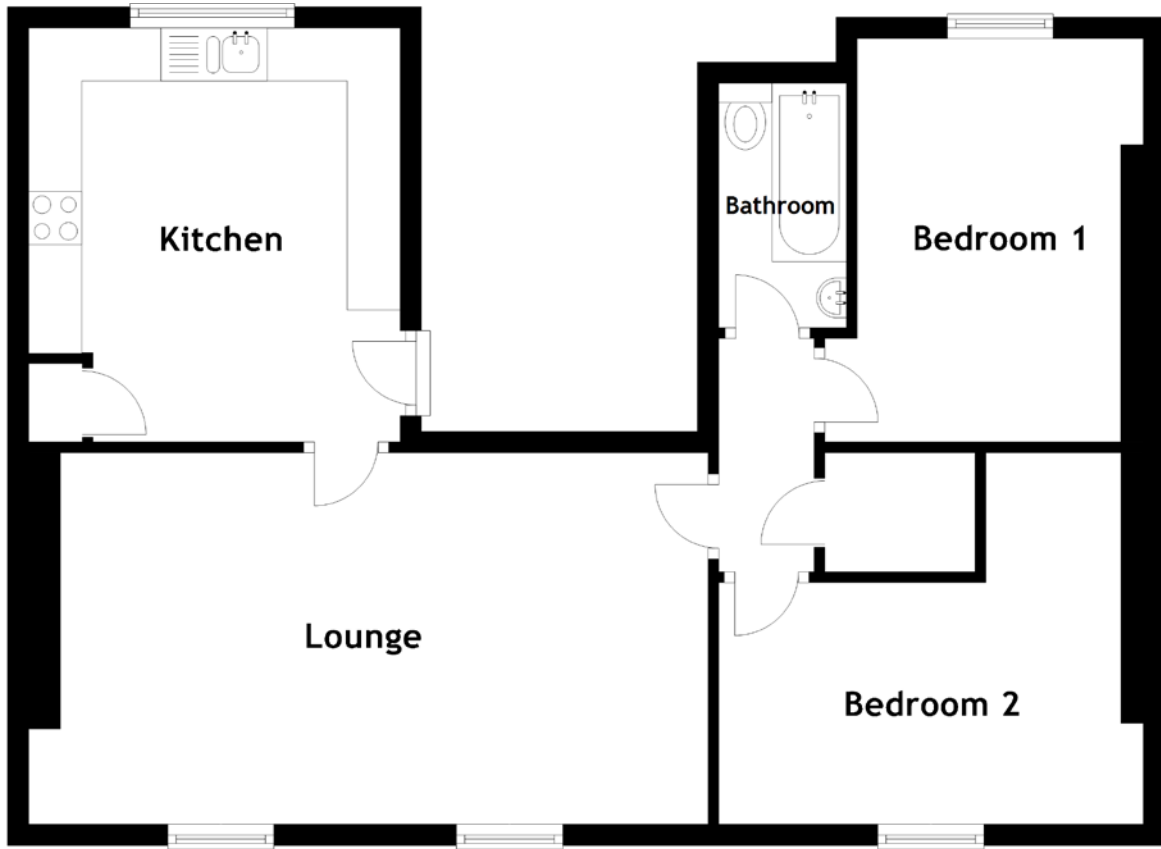


FLOOR PLAN, DIMENSIONS & MAP



Approximate Dimensions (Taken from the widest point)

Lounge 6.40m (21') x 3.50m (11'6")
 Kitchen 3.90m (12'10") x 3.50m (11'6")
 Bedroom 1 3.80m (12'6") x 2.40m (7'10")

Bedroom 2 4.00m (13'1") x 3.50m (11'6")
 Bathroom 2.30m (7'7") x 1.20m (3'11")

Gross internal floor area (m²): 65m²
 EPC Rating: F

