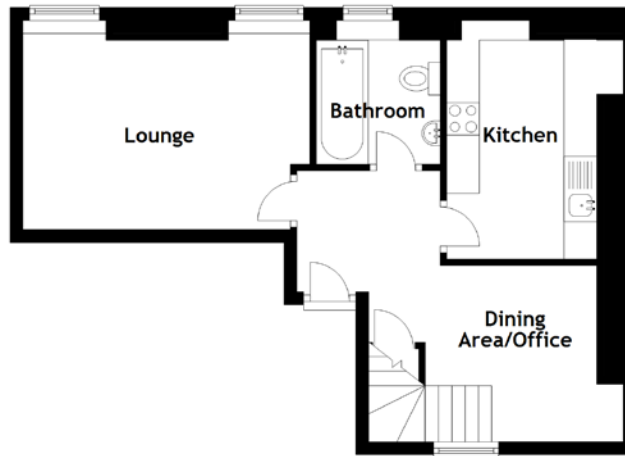


FLOOR PLAN, DIMENSIONS & MAP



Approximate Dimensions
(Taken from the widest point)

| | |
|--------------------|-------------------------------|
| Lounge | 4.40m (14'5") x 2.90m (9'6") |
| Kitchen | 3.35m (11') x 2.30m (7'6") |
| Dining Area/Office | 3.90m (12'10") x 2.30m (7'6") |
| Bathroom | 2.20m (7'3") x 1.90m (6'3") |

| | |
|------------------|--------------------------------|
| Bedroom 1 | 3.80m (12'6") x 3.60m (11'10") |
| Walk-in Wardrobe | 3.60m (11'10") x 2.20m (7'3") |
| Bedroom 2 | 3.80m (12'5") x 2.50m (8'2") |
| Bedroom 3 | 3.60m (11'10") x 2.10m (6'11") |

Gross internal floor area (m²): 86m²
EPC Rating: C

