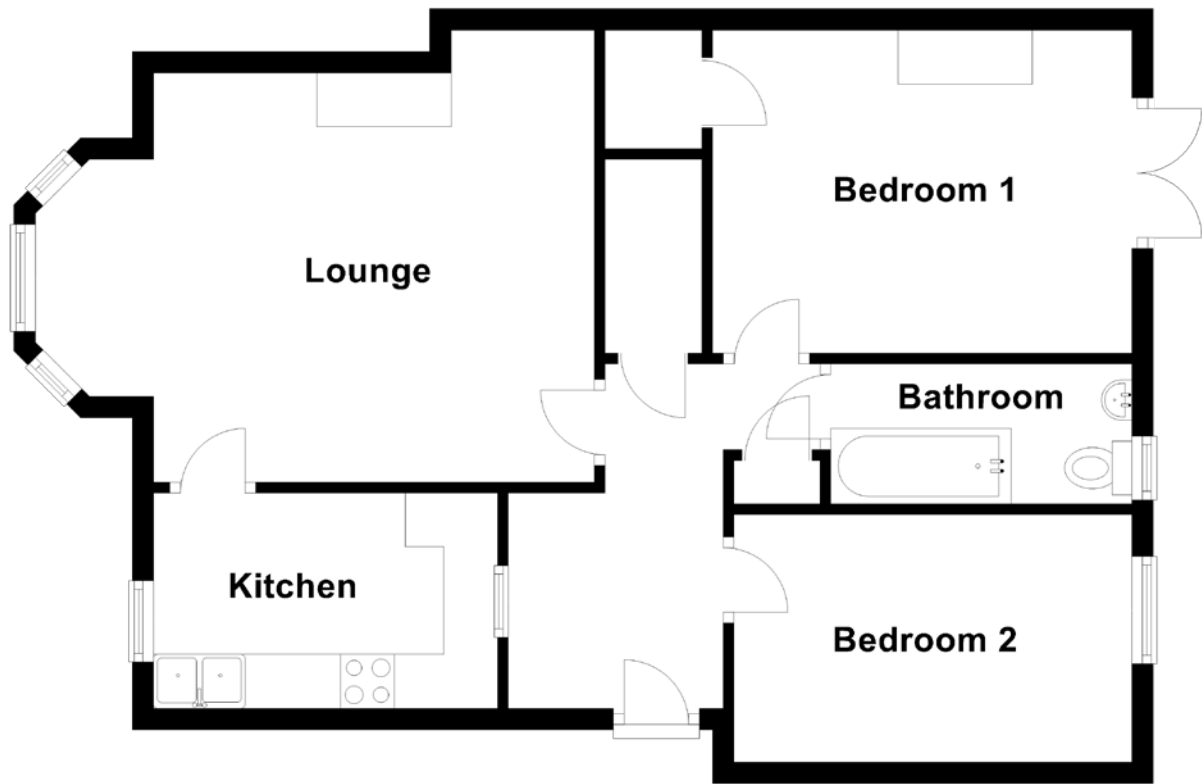


FLOOR PLAN, DIMENSIONS & MAP



Approximate Dimensions (Taken from the widest point)

Lounge 5.20m (17'1") x 4.20m (13'9")
Kitchen 3.20m (10'6") x 2.00m (6'7")
Bedroom 1 3.90m (12'10") x 3.00m (9'10")

Bedroom 2 3.70m (12'2") x 2.30m (7'7")
Bathroom 2.80m (9'2") x 1.30m (4'3")

Gross internal floor area (m²): 67m²
EPC Rating: C

