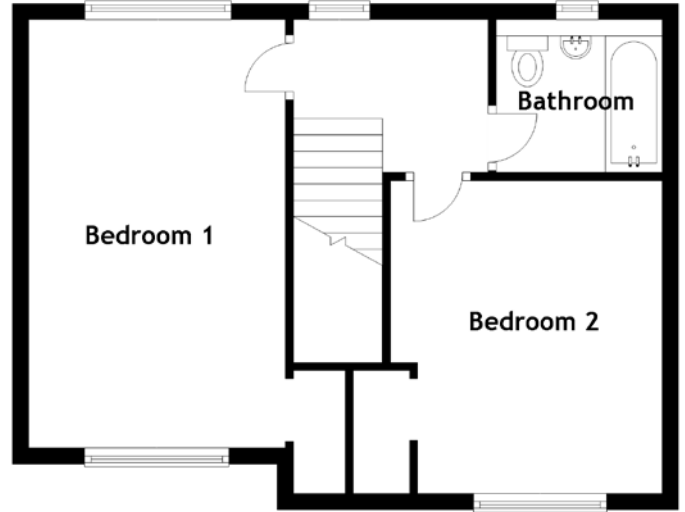
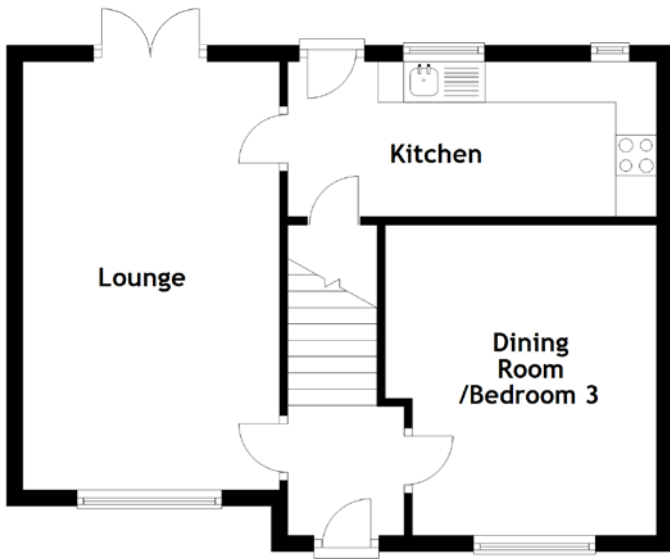


# FLOOR PLAN, DIMENSIONS & MAP



Approximate Dimensions (Taken from the widest point)

Lounge	5.27m (17'3") x 3.16m (10'4")
Kitchen	4.54m (14'11") x 1.91m (6'3")
Dining Room/Bedroom 3	3.82m (12'6") x 3.34m (10'11")
Bathroom	2.04m (6'8") x 1.88m (6'2")
Bedroom 1	5.27m (17'3") x 3.16m (10'4")
Bedroom 2	3.85m (12'8") x 3.35m (11')

Gross internal floor area (m<sup>2</sup>): 88m<sup>2</sup>

EPC Rating: D

Extras (Included in the sale): Freestanding appliances and furniture may be available by separate negotiation.

