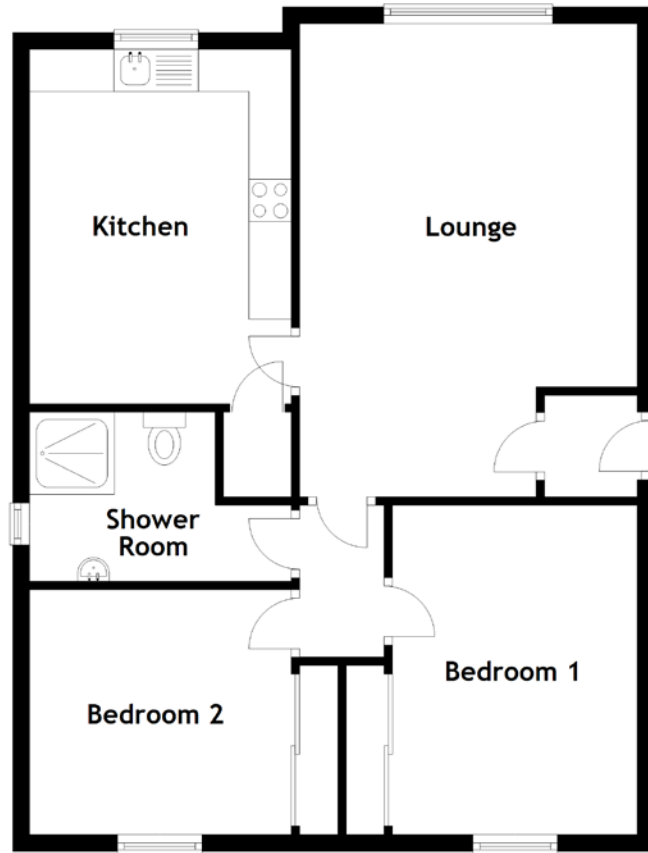


FLOOR PLAN, DIMENSIONS & MAP



Approximate Dimensions (Taken from the widest point)

Lounge 5.60m (18'4") x 4.00m (13'1")
 Kitchen 4.20m (13'9") x 3.10m (10'2")
 Shower Room 3.10m (10'2") x 2.00m (6'7")
 Bedroom 1 3.90m (12'9") x 2.90m (9'6")

Bedroom 2

3.10m (10'2") x 2.90m (9'6")

Gross internal floor area (m²): 69m² | EPC Rating: C

Extras: Floor coverings, light fittings, blinds and window dressings.

