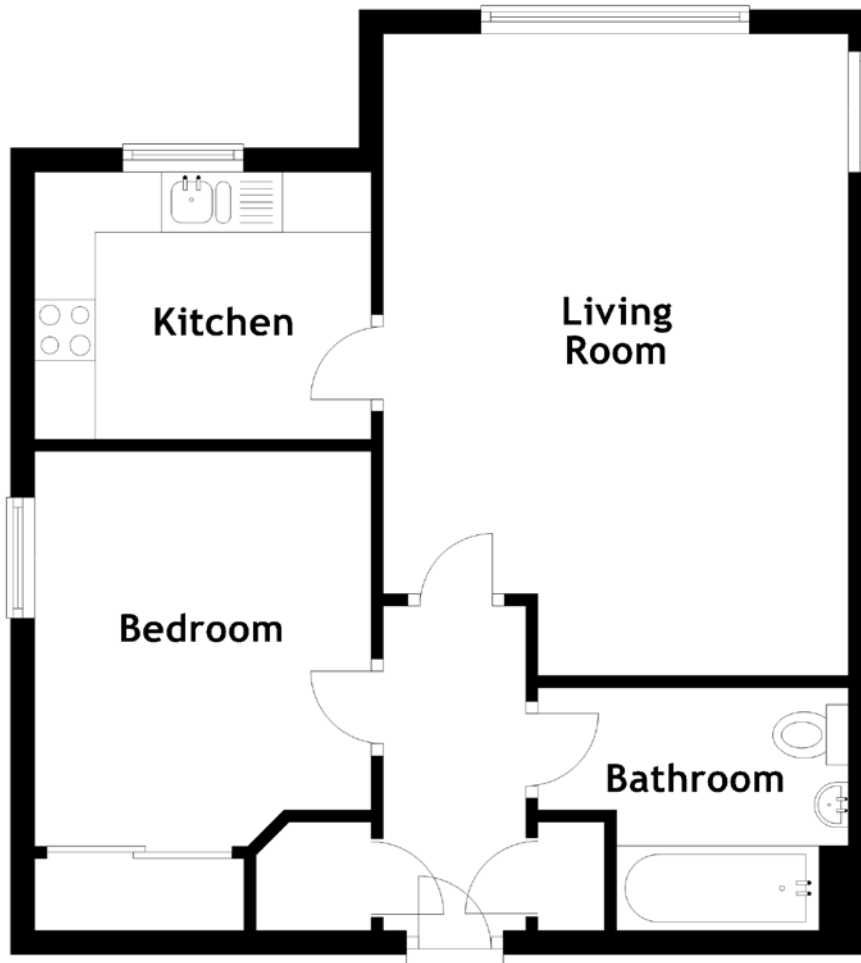


FLOOR PLAN, DIMENSIONS & MAP



Approximate Dimensions
(Taken from the widest point)

Living Room
Kitchen

5.31m (17'5") x 3.85m (12'8")
2.79m (9'2") x 2.21m (7'3")

Bathroom
Bedroom

2.57m (8'5") x 2.01m (6'7")
3.27m (10'9") x 2.79m (9'2")

Gross internal floor area (m²): 47m²
EPC Rating: C

