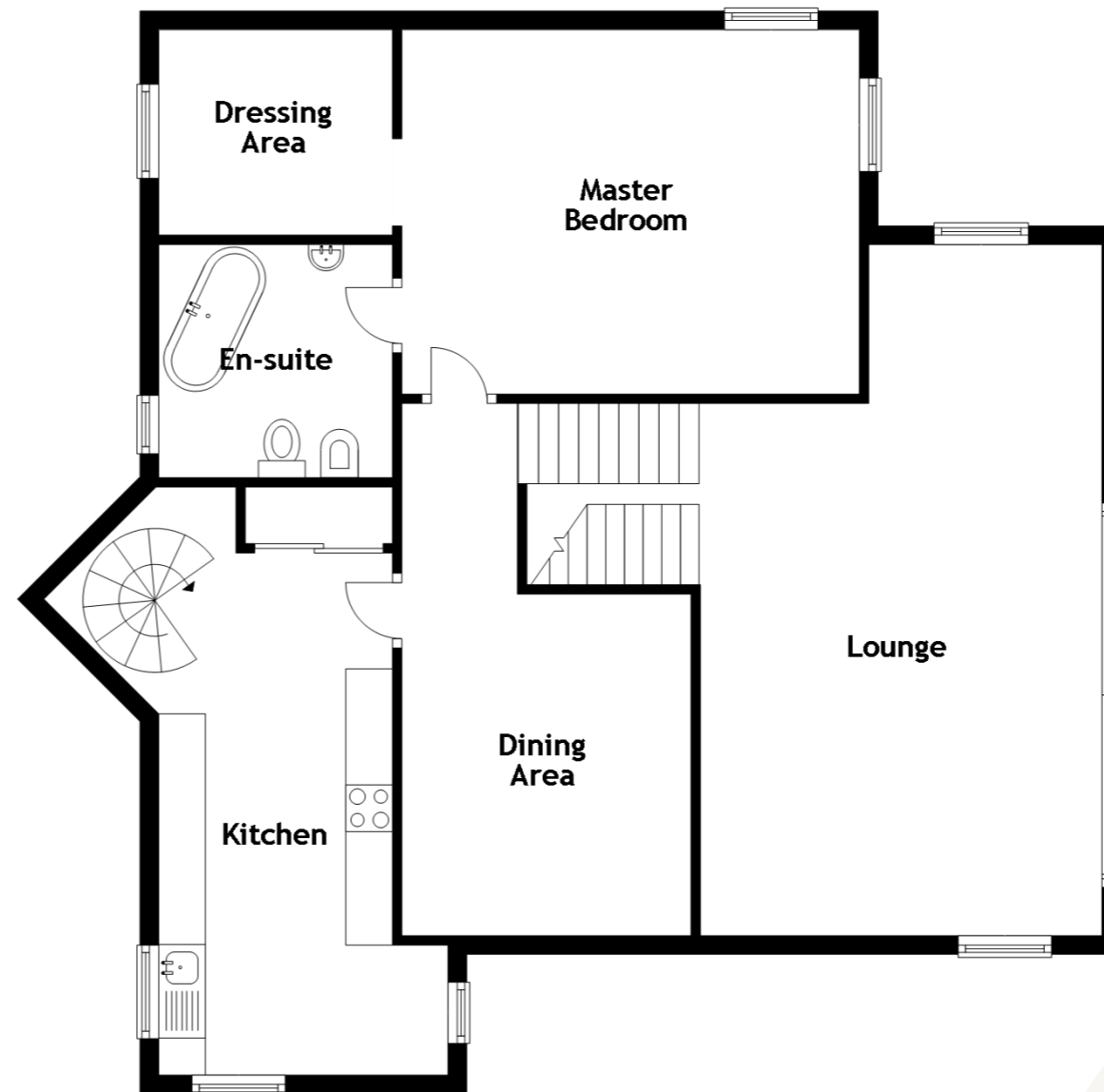
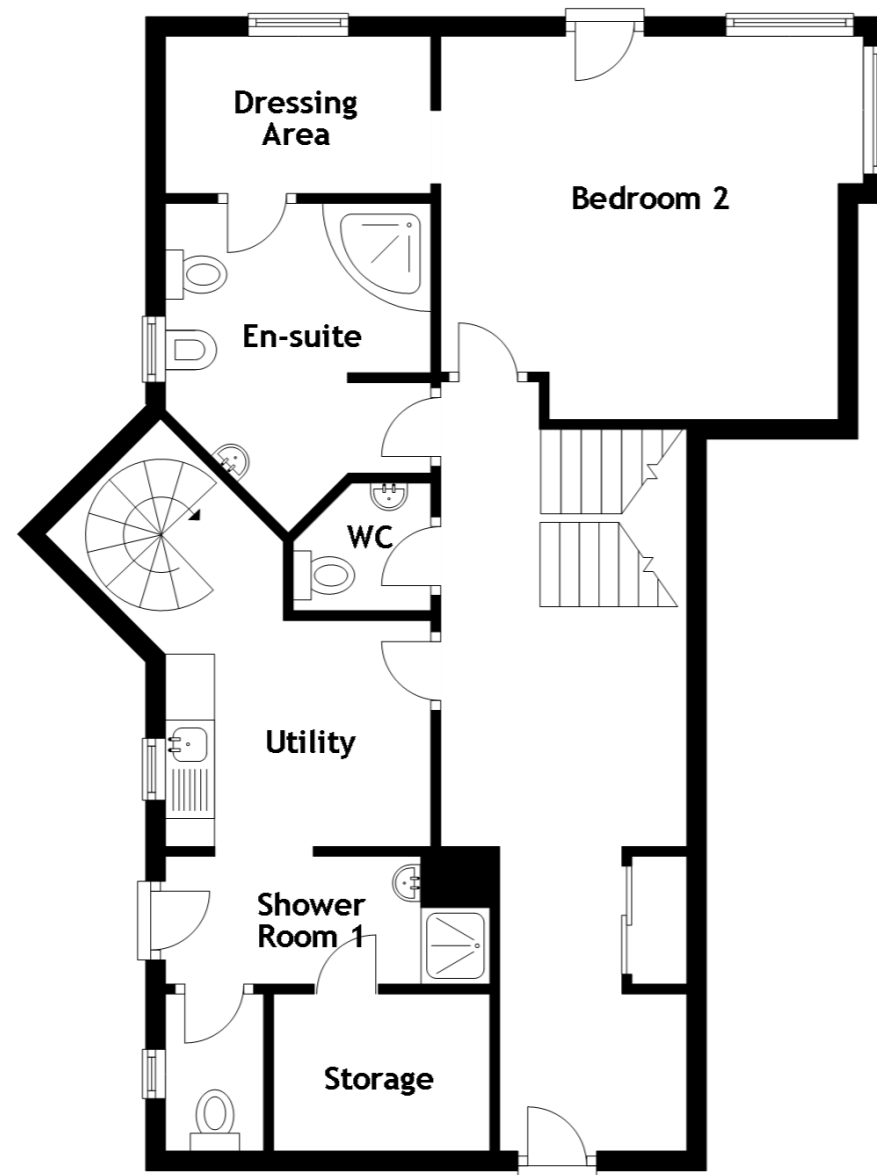
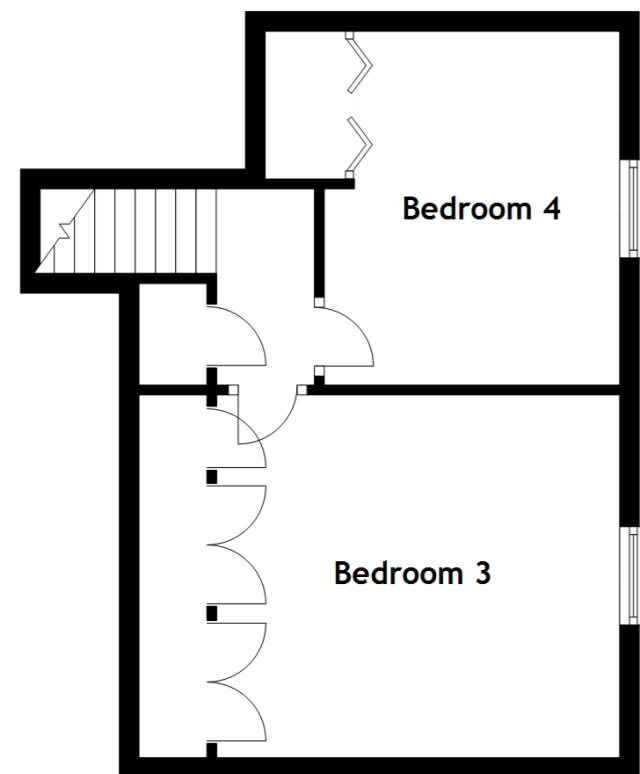


FLOOR PLAN, DIMENSIONS & MAP



Approximate Dimensions (Taken from the widest point)

Lounge	5.70m (18'8") x 4.30m (14'1")
Dining Area	5.70m (18'8") x 3.10m (10'2")
Kitchen	6.30m (20'8") x 3.10m (10'2")
Utility	2.70m (8'10") x 2.30m (7'7")
Shower Room	3.30m (10'10") x 1.30m (4'3")
WC	1.40m (4'7") x 1.30m (4'3")
Master Bedroom	4.90m (16'1") x 3.90m (12'10")
En-suite	2.50m (8'3") x 2.50m (8'2")
Dressing Area	2.50m (8'3") x 2.20m (7'3")
Bedroom 2	4.30m (14'1") x 3.90m (12'10")
Dressing Area	2.70m (8'10") x 1.60m (5'3")
En-suite	3.30m (10'10") x 2.70m (8'10")
Bedroom 3	4.10m (13'5") x 3.69m (12'1")
Bedroom 4	3.60m (11'10") x 3.00m (9'10")
Storage	2.20m (7'3") x 1.60m (5'3")

Gross internal floor area (m²): 198m² | EPC Rating: E

Extras (Included in the sale): Floor coverings, light fittings, blinds and window dressings.