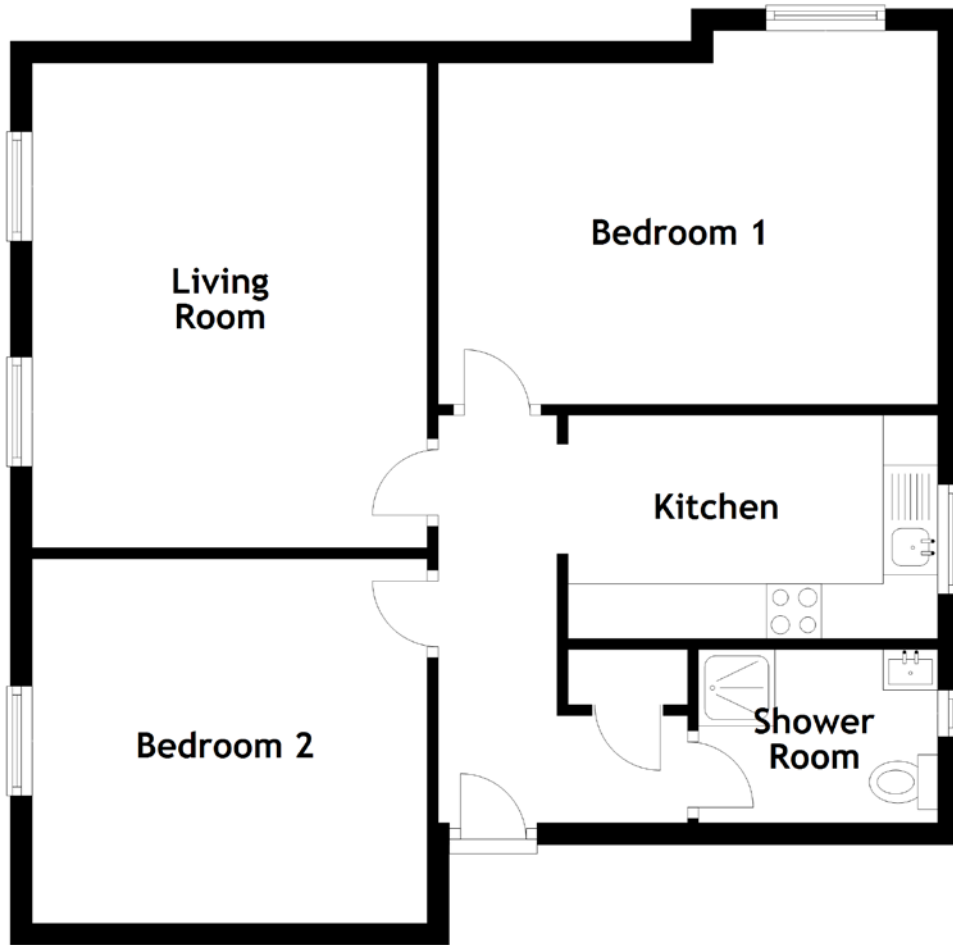


FLOOR PLAN, DIMENSIONS & MAP



Approximate Dimensions (Taken from the widest point)

Living Room 4.43m (14'6") x 3.61m (11'10")
 Kitchen 3.38m (11'1") x 2.04m (6'8")
 Shower Room 2.19m (7'2") x 1.58m (5'2")

Bedroom 1 4.57m (15') x 3.41m (11'2")
 Bedroom 2 3.61m (11'10") x 3.33m (10'11")

Gross internal floor area (m²): 63m²
 EPC Rating: D

