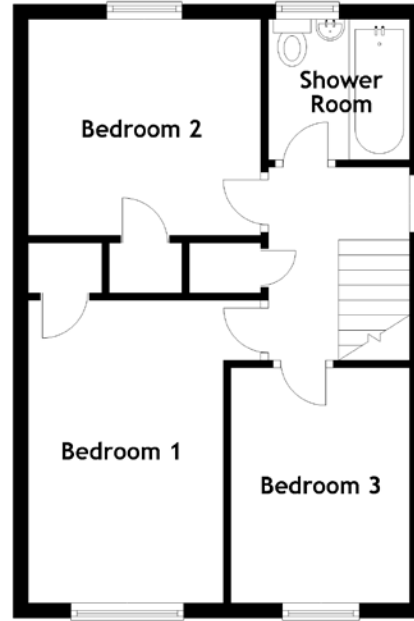
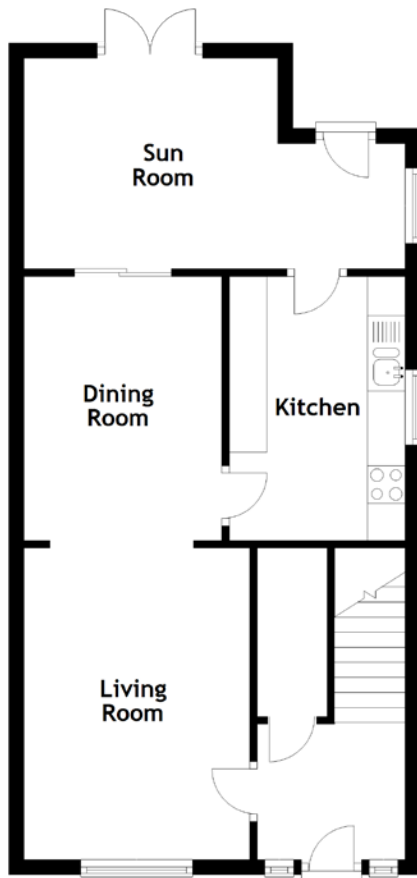


FLOOR PLAN, DIMENSIONS & MAP



Approximate Dimensions
(Taken from the widest point)

Living Room	4.14m (13'7") x 3.00m (9'10")
Dining Room	3.51m (11'6") x 2.63m (8'8")
Kitchen	3.51m (11'6") x 2.34m (7'8")
Sun Room	

Bedroom 1	4.02m (13'2") x 3.09m (10'2")
Bedroom 2	3.09m (10'2") x 2.87m (9'5")
Bedroom 3	3.12m (10'3") x 2.37m (7'9")
Shower Room	1.97m (6'6") x 1.86m (6'1")

Gross internal floor area (m²): 89m²
EPC Rating: C

