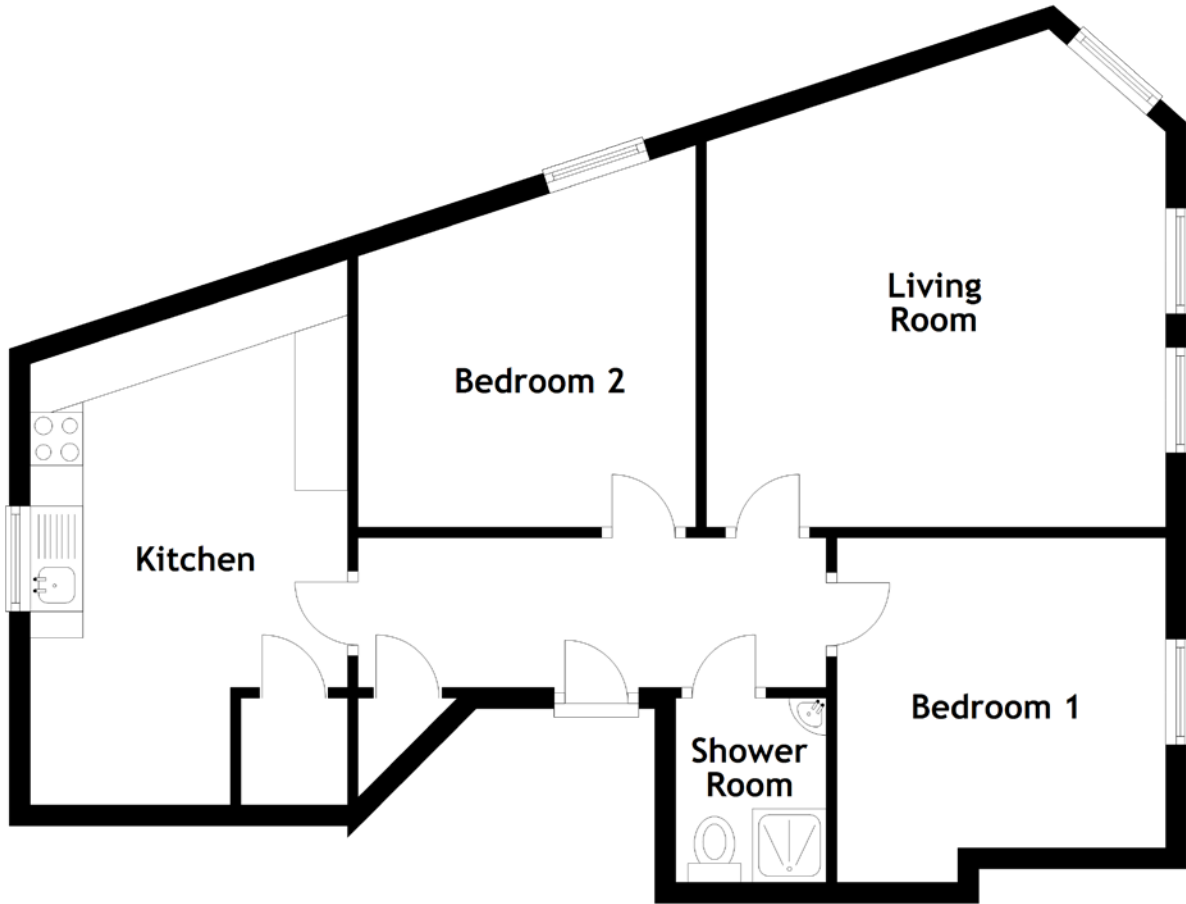


FLOOR PLAN, DIMENSIONS & MAP



Approximate Dimensions (Taken from the widest point)

Living Room 4.73m (15'6") x 4.36m (14'4")
 Kitchen 4.85m (15'11") x 3.01m (9'11")
 Bedroom 1 3.27m (10'9") x 3.12m (10'3")

Bedroom 2 3.66m (12') x 3.21m (10'6")
 Shower Room 1.75m (5'9") x 1.43m (4'8")

Gross internal floor area (m²): 65m²
 EPC Rating: D

