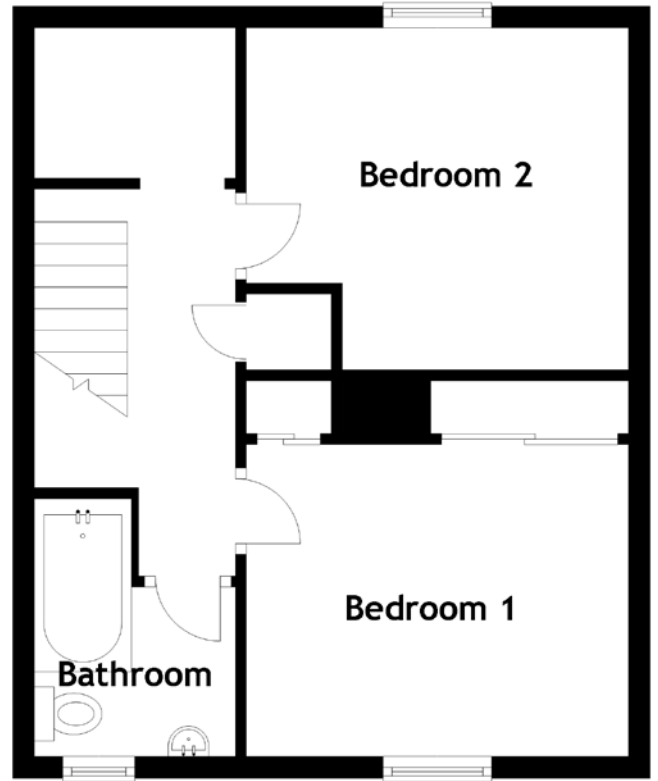
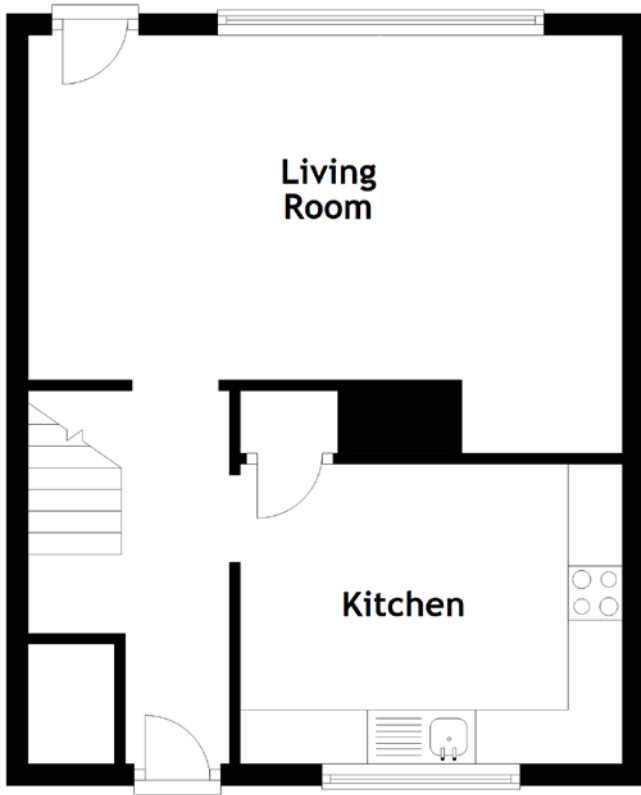


FLOOR PLAN, DIMENSIONS & MAP



Approximate Dimensions (Taken from the widest point)

Living Room 5.49m (18') x 3.86m (12'8")
 Kitchen 3.53m (11'7") x 2.77m (9'1")
 Bedroom 1 3.53m (11'7") x 2.88m (9'6")

Bedroom 2 3.53m (11'7") x 3.16m (10'4")
 Bathroom 2.38m (7'10") x 1.86m (6'1")

Gross internal floor area (m²): 74m²
 EPC Rating: C

