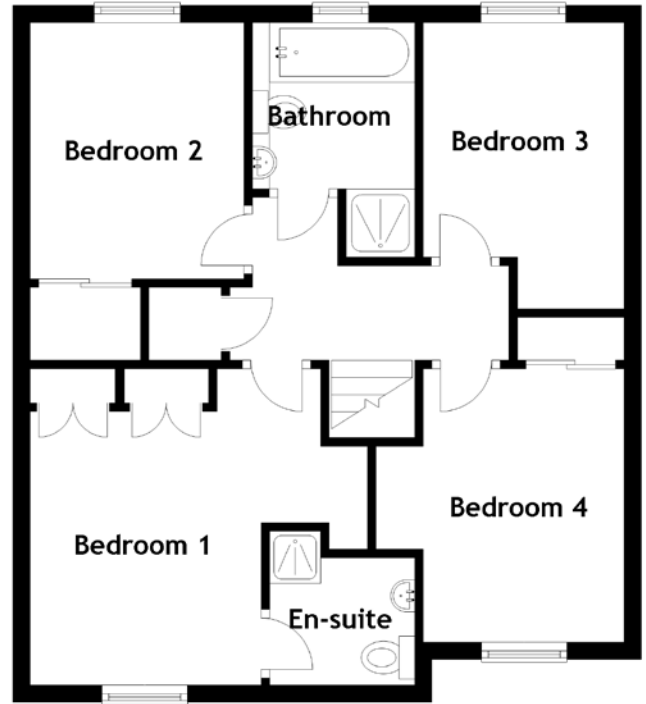
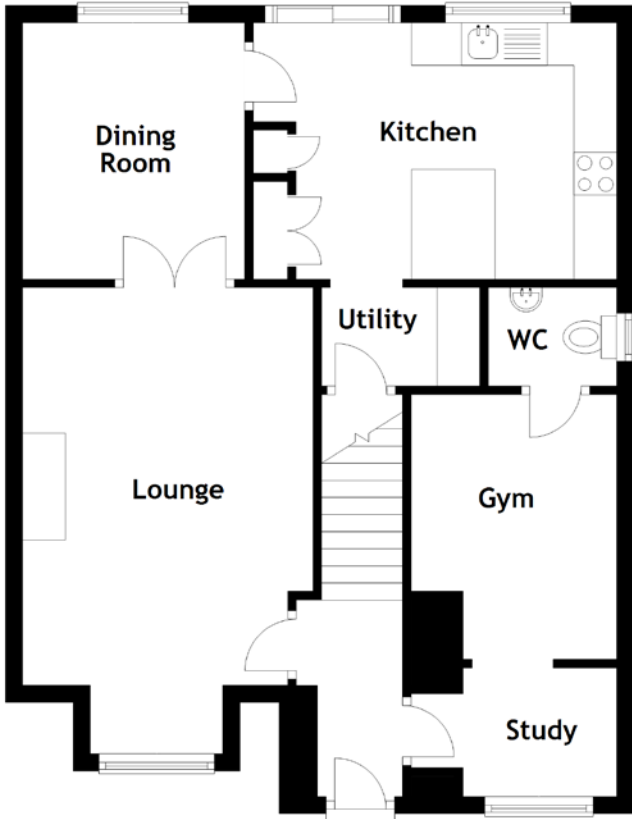


FLOOR PLAN, DIMENSIONS & MAP



Approximate Dimensions (Taken from the widest point)

Kitchen	4.25m (13'11") x 3.00m (9'10")
Dining Room	3.00m (9'10") x 2.60m (8'6")
Lounge	5.45m (17'11") x 3.40m (11'2")
WC	1.50m (4'11") x 1.15m (3'9")
Gym	3.10m (10'2") x 2.40m (7'11")
Utility	1.85m (6'1") x 1.15m (3'9")
Study	1.80m (5'11") x 1.50m (4'11")

Bathroom	2.75m (9') x 1.90m (6'3")
Bedroom 1	3.80m (12'4") x 3.40m (11'2")
En-suite	1.80m (5'11") x 1.70m (5'7")
Bedroom 2	3.00m (9'10") x 2.50m (8'2")
Bedroom 3	3.35m (11') x 2.35m (7'9")
Bedroom 4	3.20m (10'6") x 2.50m (8'2")

Gross internal floor area (m²): 110m²
EPC Rating: C

