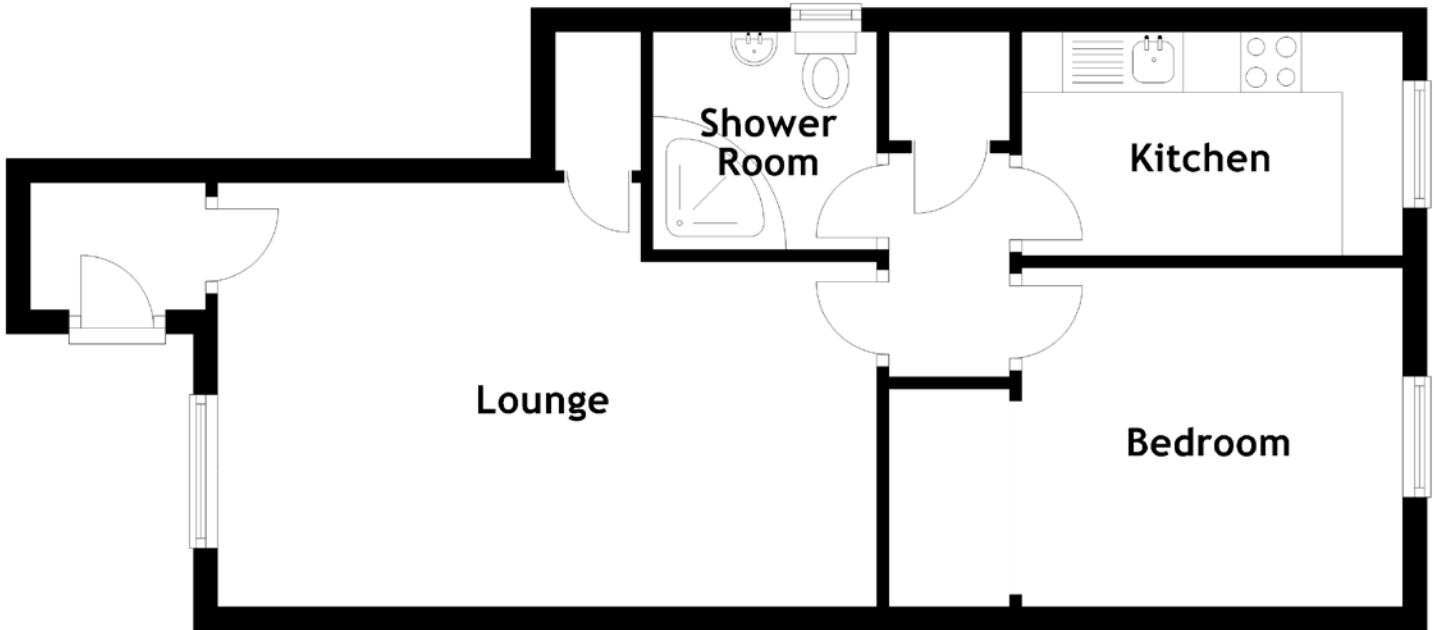


FLOOR PLAN, DIMENSIONS & MAP



Approximate Dimensions
(Taken from the widest point)

Lounge
Kitchen

5.45m (17'11") x 3.50m (11'6")
3.15m (10'4") x 1.85m (6'1")

Bedroom
Shower Room

3.15m (10'4") x 2.80m (9'2")
1.85m (6'1") x 1.80m (5'11")

Gross internal floor area (m²): 44m²
EPC Rating: C

