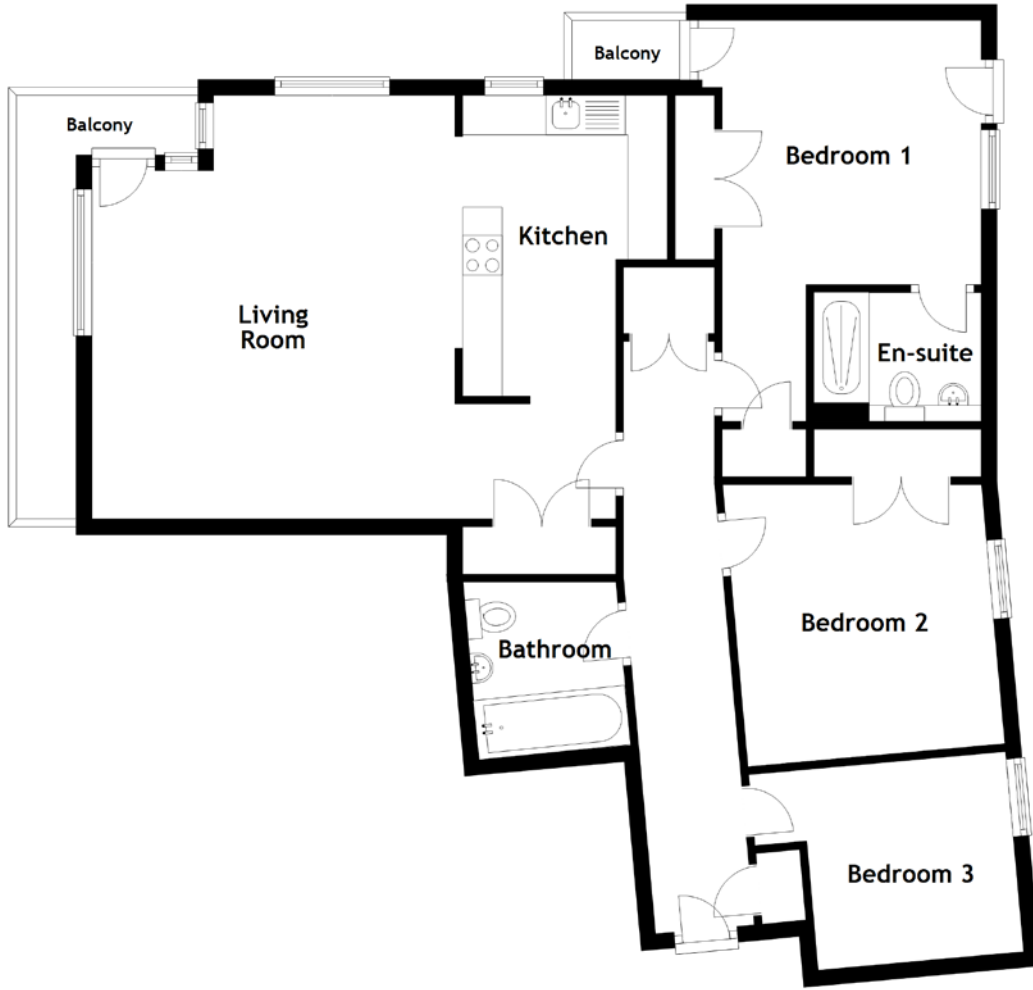


FLOOR PLAN, DIMENSIONS & MAP



Approximate Dimensions (Taken from the widest point)

Living Room 6.62m (21'9") x 5.35m (17'7")
 Kitchen 3.80m (12'6") x 2.97m (9'9")
 Bedroom 1 5.07m (16'7") x 3.50m (11'6")
 En-suite 2.11m (6'11") x 1.60m (5'3")

Bedroom 2 3.57m (11'8") x 3.20m (10'6")
 Bedroom 3 3.21m (10'6") x 2.61m (8'7")
 Bathroom 2.06m (6'9") x 1.92m (6'4")

Gross internal floor area (m²): 88m²
 EPC Rating: B

