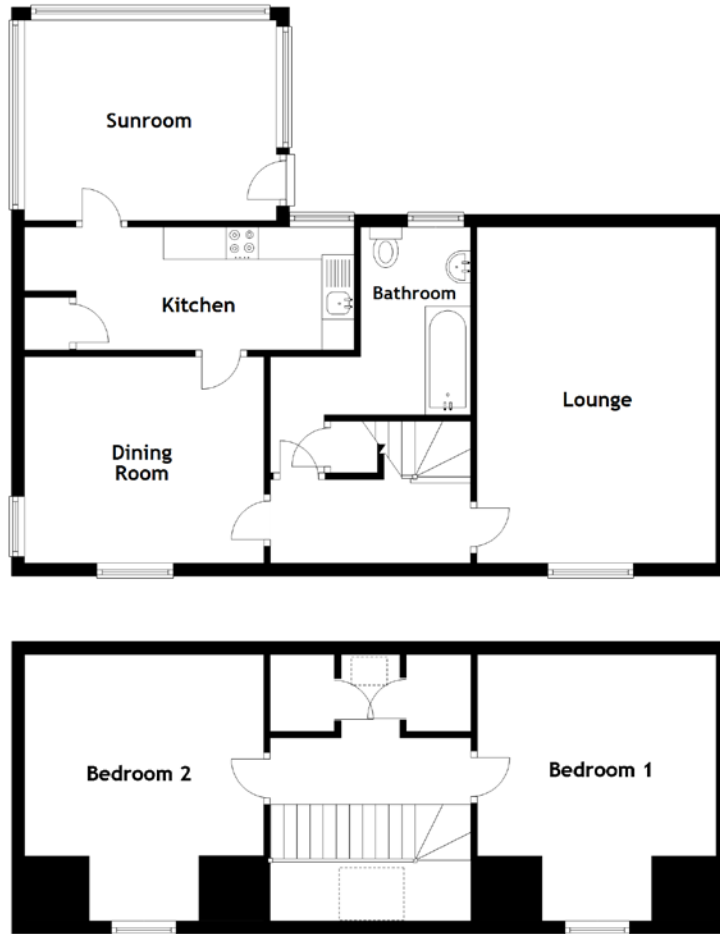


# FLOOR PLAN, DIMENSIONS & MAP



Approximate Dimensions (Taken from the widest point)

Lounge 5.20m (17'1") x 3.70m (12'2")  
 Dining Room 3.70m (12'2") x 3.19m (10'6")  
 Kitchen 4.30m (14'1") x 1.90m (6'3")  
 Sunroom 3.90m (12'10") x 3.10m (10'2")

Bathroom 2.90m (9'6") x 2.26m (7'5")  
 Bedroom 1 4.10m (13'6") x 3.70m (12'2")  
 Bedroom 2 4.10m (13'6") x 3.70m (12'2")

Gross internal floor area (m<sup>2</sup>): 115m<sup>2</sup>  
 EPC Rating: E

