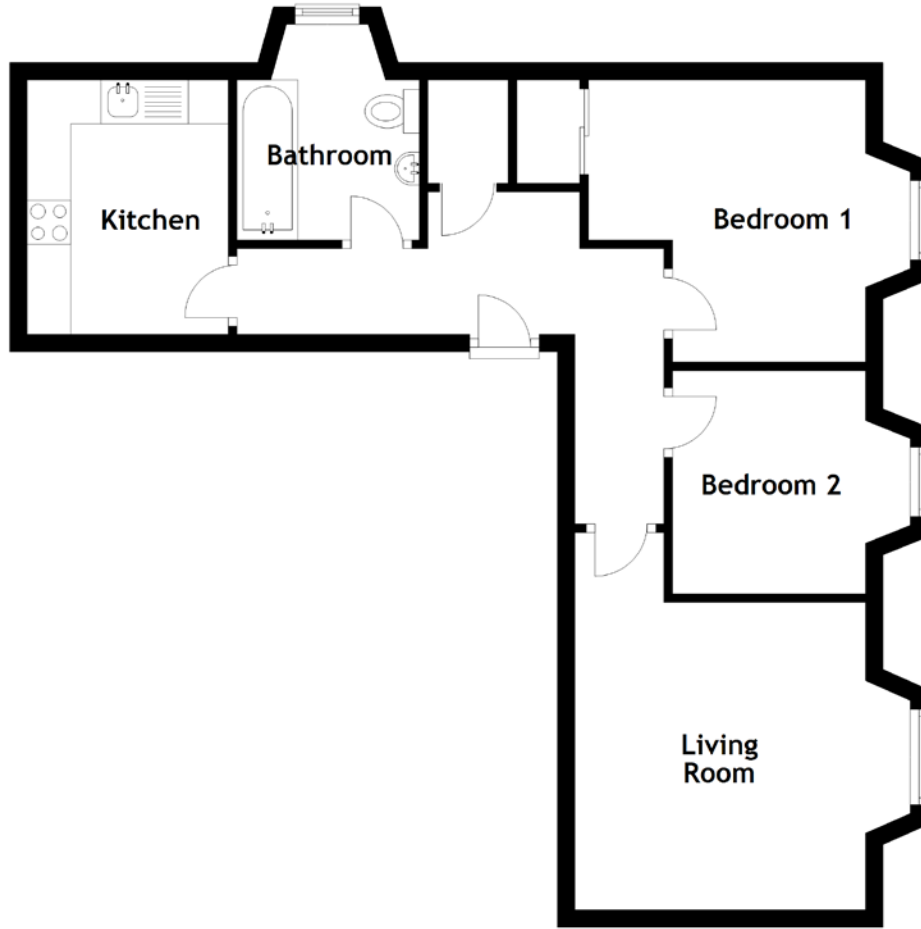


FLOOR PLAN, DIMENSIONS & MAP



Approximate Dimensions (Taken from the widest point)

Living Room 4.32m (14'2") x 3.85m (12'7")
Kitchen 2.91m (9'7") x 2.31m (7'7")
Bathroom 2.47m (8'1") x 2.09m (6'10")

Bedroom 1 3.69m (12'1") x 3.23m (10'7")
Bedroom 2 2.73m (8'11") x 2.55m (8'5")

Gross internal floor area (m²): 50m²
EPC Rating: E

