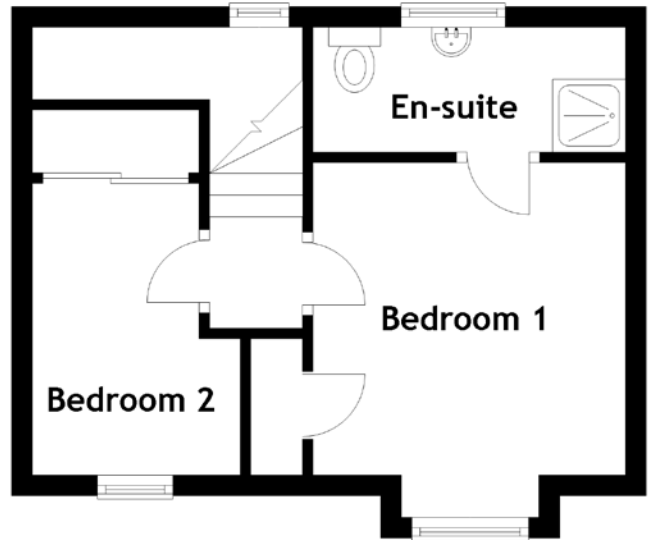
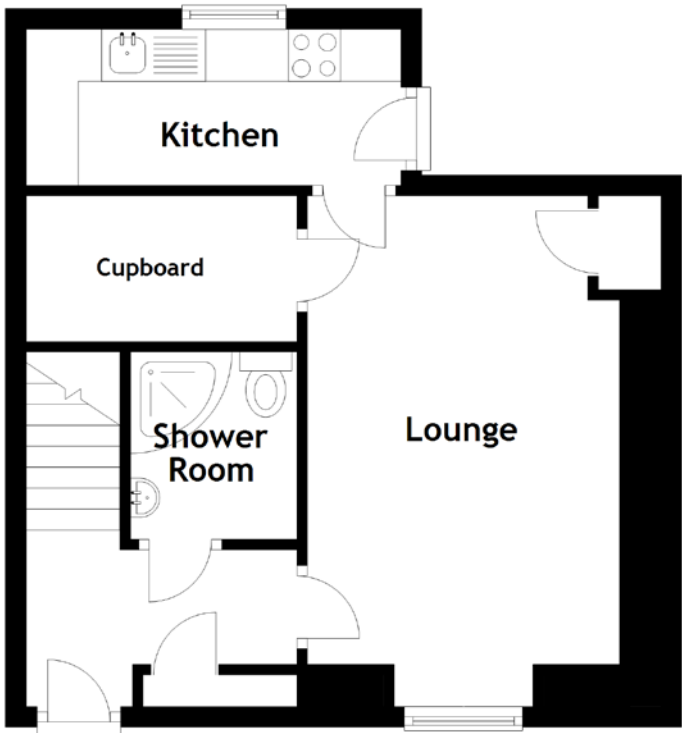


# FLOOR PLAN, DIMENSIONS & MAP



Approximate Dimensions  
(Taken from the widest point)

Lounge	4.50m (14'9") x 3.30m (10'10")
Kitchen	3.60m (11'10") x 1.50m (4'11")
Shower Room	1.80m (5'11") x 1.60m (5'3")

Bedroom 1	3.00m (9'10") x 3.00m (9'10")
En-suite	3.00m (9'10") x 1.20m (3'11")
Bedroom 2	2.80m (9'2") x 2.00m (6'7")

Gross internal floor area (m<sup>2</sup>): 55m<sup>2</sup>  
EPC Rating: D

