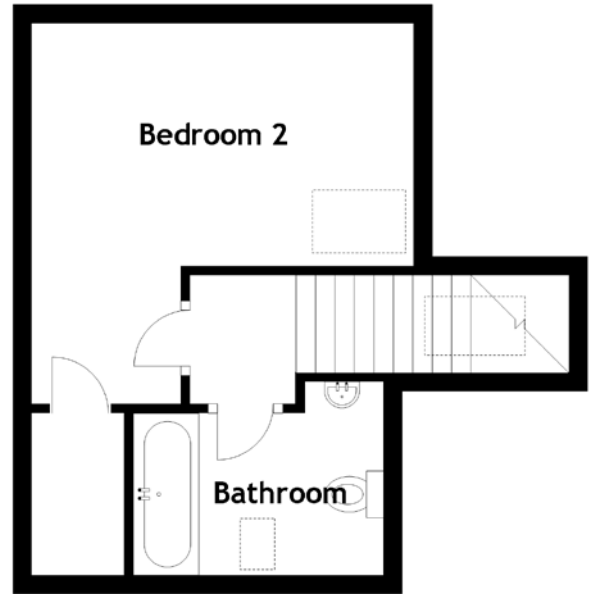
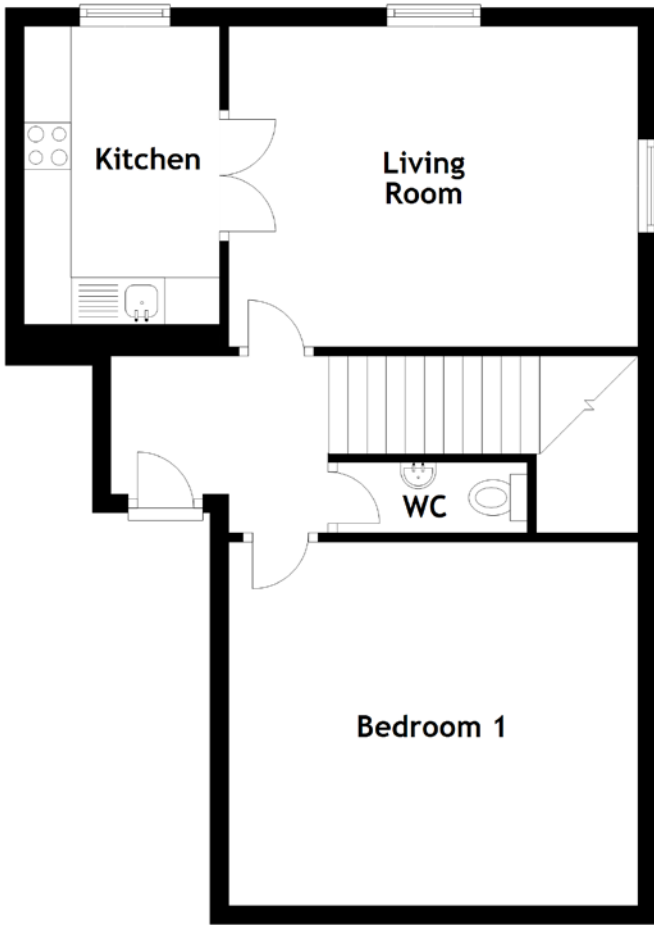


FLOOR PLAN, DIMENSIONS & MAP



Approximate Dimensions (Taken from the widest point)

Living Room 4.38m (14'4") x 3.43m (11'3")
 Kitchen 3.19m (10'6") x 2.09m (6'10")
 WC 2.03m (6'8") x 0.75m (2'6")

Bedroom 1 4.34m (14'3") x 3.89m (12'9")
 Bedroom 2 4.08m (13'5") x 4.07m (13'4")
 Bathroom 2.67m (8'9") x 2.07m (6'9")

Gross internal floor area (m²): 73m² | EPC Rating: C

