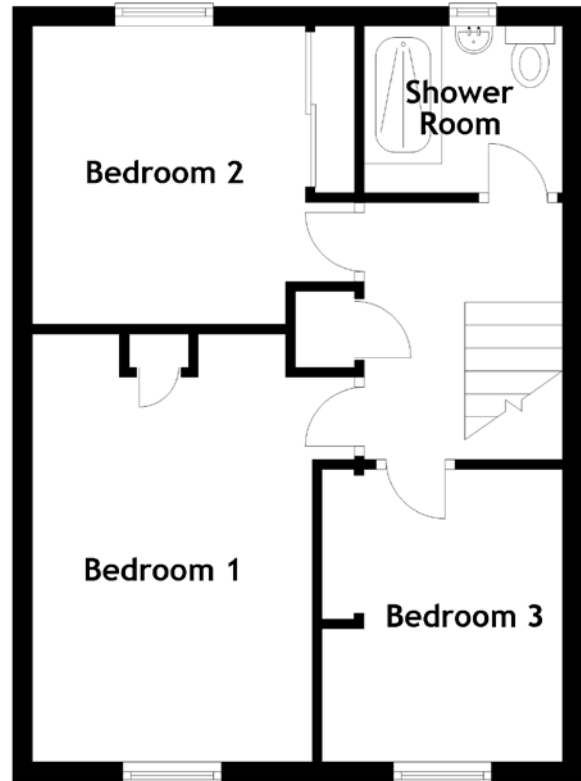
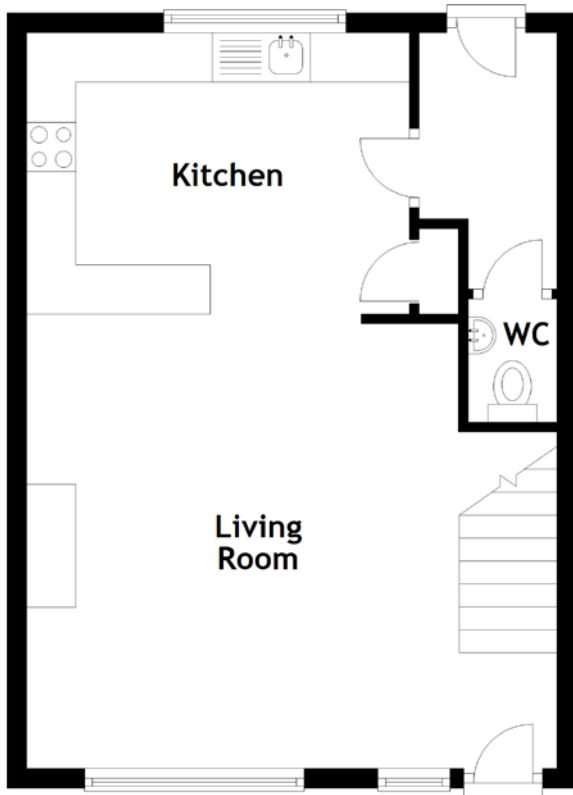


# FLOOR PLAN, DIMENSIONS & MAP



Approximate Dimensions (Taken from the widest point)

Living Room	5.39m (17'8") x 4.52m (14'10")
Kitchen	3.89m (12'9") x 2.86m (9'5")
WC	1.25m (4'1") x 0.90m (3')
Shower Room	1.97m (6'6") x 1.70m (5'7")

Bedroom 1	3.91m (12'10") x 3.28m (10'9")
Bedroom 2	3.28m (10'9") x 3.03m (9'11")
Bedroom 3	2.97m (9'9") x 2.44m (8')

Gross internal floor area (m<sup>2</sup>): 82m<sup>2</sup>  
EPC Rating: C

