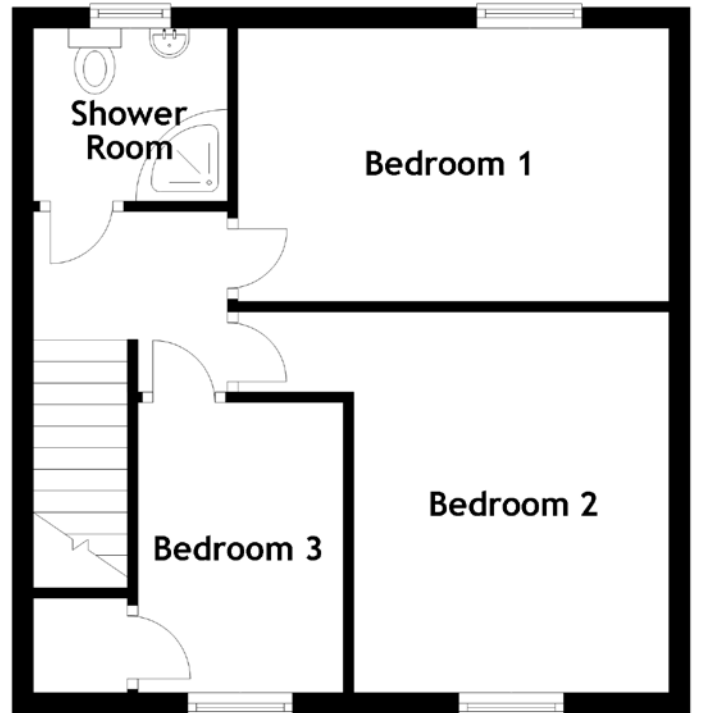
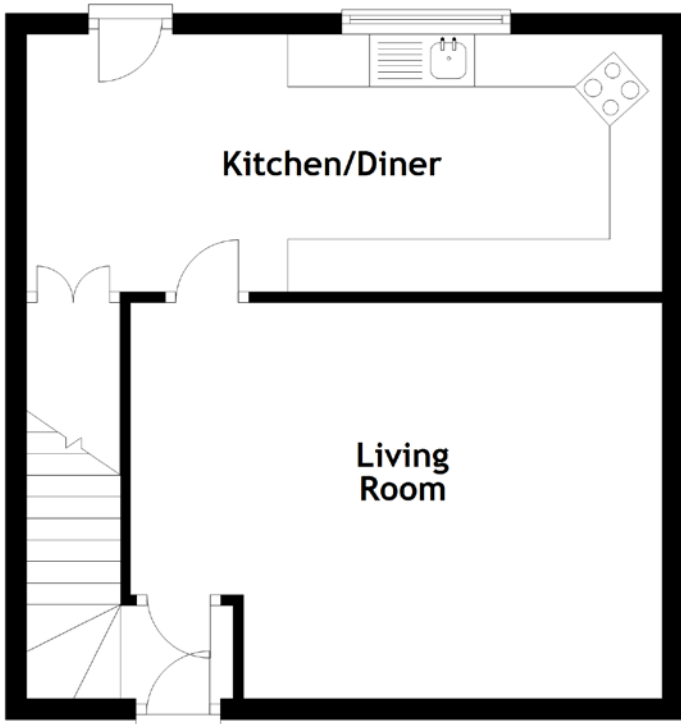


# FLOOR PLAN, DIMENSIONS & MAP



Approximate Dimensions  
(Taken from the widest point)

Living Room 5.06m (16'7") x 3.77m (12'4")  
 Kitchen/Diner 6.05m (19'10") x 2.45m (8')  
 Shower Room 1.85m (6'1") x 1.64m (5'5")

Bedroom 1 4.10m (13'5") x 2.60m (8'6")  
 Bedroom 2 4.10m (13'5") x 3.68m (12'1")  
 Bedroom 3 2.76m (9'1") x 1.95m (6'5")

Gross internal floor area (m<sup>2</sup>): 77m<sup>2</sup>  
 EPC Rating: C

