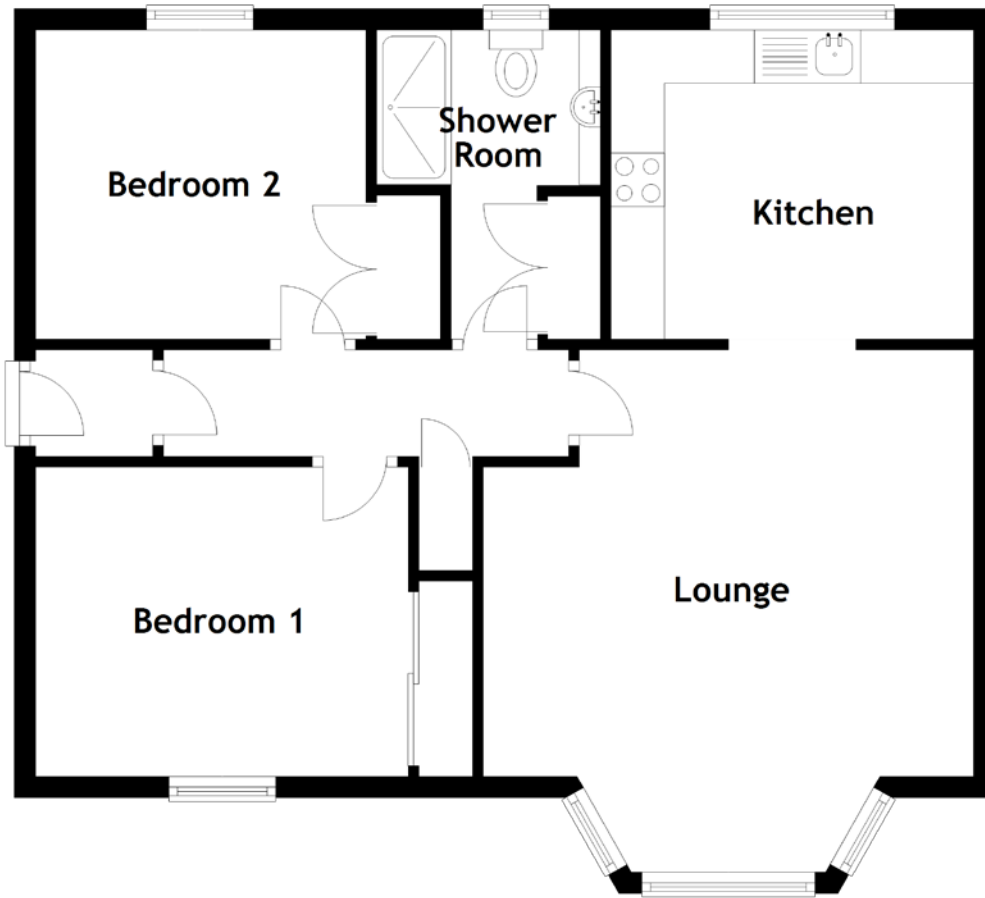


# FLOOR PLAN, DIMENSIONS & MAP



Approximate Dimensions (Taken from the widest point)

Lounge 4.90m (16'1") x 4.60m (15'1")  
 Kitchen 3.40m (11'2") x 2.90m (9'6")  
 Shower Room 2.90m (9'6") x 2.10m (6'11")

Bedroom 1 3.50m (11'6") x 2.90m (9'6")  
 Bedroom 2 3.10m (10'2") x 2.90m (9'6")

Gross internal floor area (m<sup>2</sup>): 66m<sup>2</sup>  
 EPC Rating: C

