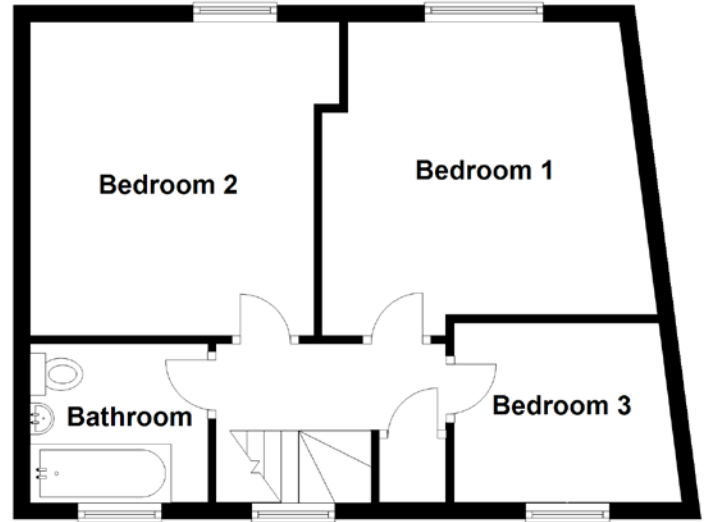
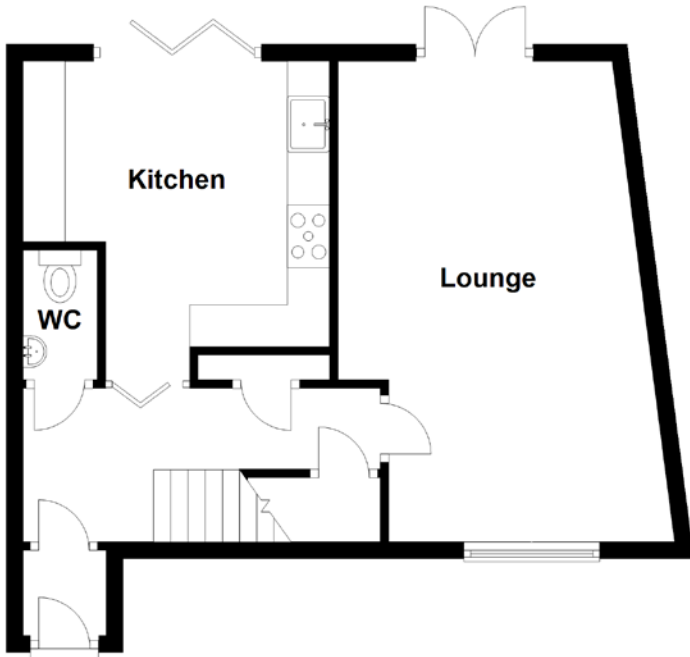


# FLOOR PLAN, DIMENSIONS & MAP



Approximate Dimensions  
(Taken from the widest point)

Lounge 5.73m (18'10") x 3.68m (12'1")  
 Kitchen 3.80m (12'6") x 3.65m (12")  
 WC 1.55m (5'1") x 0.88m (2'11")

Bedroom 1 4.09m (13'5") x 3.74m (12'3")  
 Bedroom 2 3.74m (12'3") x 3.68m (12'1")  
 Bedroom 3 2.72m (8'11") x 2.06m (6'9")  
 Bathroom 2.11m (6'11") x 1.89m (6'2")

Gross internal floor area (m<sup>2</sup>): 88m<sup>2</sup> | EPC Rating: C

